

# SINI 2016

26th Summer Institute in Nursing Informatics

## Informatics at the Crossroads of Care Coordination

July 20-22, 2016



Preconferences: July 19, 2016

## Conference Program



UNIVERSITY of MARYLAND  
SCHOOL OF NURSING

## CONTENTS

- 1 Welcome to SINI 2016

---
- 2 Conference Overview & Objectives

---
- 3 Attendee Information
  - Continuing Education for Nurses
  - Cyber Café
  - Accessing the Wireless Network
  - Accessing Presentations Online
  - Live Tweet & Social Sharing
  - Volunteers

---

- 4 Conference Planning Committee

---

- 5 Networking Events

---

- 6-7 Plenary Speakers

---

- 8 School of Nursing Campus Map

---

---

## SCHEDULE OF EVENTS

- 8 Tuesday, July 19 (Preconferences)
- 9-11 Wednesday, July 20
- 12-14 Thursday, July 21
- 15-16 Friday, July 22

---

---
- 17-18 Poster Sessions

---
- 19 Sponsors & Exhibitors

---

Inside back cover SINI 2017 Save the Date

# Welcome to SINI 2016...

Dear Participant,

The University of Maryland School of Nursing (UMSON) and the Summer Institute in Nursing Informatics (SINI) 2016 Planning Committee join in welcoming you to the 26th annual institute. This year's theme, "Informatics at the Crossroads of Care Coordination", examines the usability of systems, data visualization, data analytics and e-health applications to engage patients and families in monitoring and managing their health across the spectrum of health care delivery. Leaders in the field of informatics, as well as presenters of peer-reviewed work, will share their knowledge and experiences in the implementation and evaluation of health IT innovations to improve care and outcomes, actualize interoperability, and utilize data analytics methods.

We are pleased to provide you with this conference program, which contains vital information to help you navigate through each day of SINI as well as provide some highlights of Baltimore. It contains the schedule of invited speaker presentations and lists peer-reviewed paper and poster sessions.

We want to acknowledge and thank our sponsors: University of Maryland Medical System, University of Maryland Baltimore County, Infor Healthcare, and Orion Health. The support of these organizations is invaluable for keeping SINI dynamic, relevant, affordable, and exciting year after year.

Mark your calendars for SINI 2017, "Clinical Practice, Health, and the Internet of Things." Preconferences, providing intensive courses on selected topics, will be held July 11, 2017. The main conference, with invited and peer-reviewed speakers, posters, and networking events, will run July 12-14, 2017. For updates on SINI 2017, visit the SINI website at <http://nursing.umaryland.edu/sini>, throughout the year.

We are delighted that you are here. Together, we will generate new ideas and collaborations. Thank you for participating.

With best regards,

Mary Etta Mills, ScD, RN, NEA-BC, FAAN  
Professor  
University of Maryland School of Nursing  
2016 SINI Program Co-Chair

Charlotte Seckman, PhD, RN-BC, CNE  
Assistant Professor  
University of Maryland School of Nursing  
2016 SINI Program Co-Chair

# CONFERENCE OVERVIEW & OBJECTIVES

From mastering the essentials of informatics to capturing, analyzing, and using information to enable care integration, SINI has it all. Known for providing unique networking opportunities with experts and leaders in informatics, SINI exposes participants to innovations leading and supporting practice transformation.

## CONFERENCE OBJECTIVES

1. Describe the scope of nursing informatics and identify essential competencies for clinicians and informatics professionals.
2. Identify innovations in nursing informatics, technologies, and practice across the spectrum of care.
3. Explore the impact of informatics on quality, safety, and outcomes to include data analytics, meaningful use, consumer engagement, and electronic health record adoption.
4. Examine strategies for health information exchange and interoperability across systems and settings for coordination of care.

## TRACKS

SINI 2016 features four educational tracks, including a special track designed specifically for the nursing informatics novice.

### **Track A: Clinical Informatics: Essential Knowledge and Skillsets**

Offers an intensive overview of the field and opportunities from the University of Maryland School of Nursing's expert faculty and invited speakers. Designed specifically for the informatics novice, these sessions provide a solid foundation for enhanced learning.

### **Track B: Innovative Health Care Informatics Across the Spectrum of Care**

Covers innovations that have been implemented and the benefits that have been realized. Innovations may involve, but are not limited to, patient generated data, personal health records, new ways of addressing old problems, new problems and innovative solutions, or new tools.

### **Track C: Informatics Impact on Quality, Safety, and Outcomes**

Examines the impact of informatics and health information technology on quality and safety outcomes in health care settings. Leading-edge research and best practices on addressing data analytics, meaningful use, consumer informatics, and interprofessional collaboration will be presented.

### **Track D: Health Information Exchange and Interoperability**

Offers an interactive deep dive at the expert level, exploring a community planning model as a foundation for bridging information gaps and addressing integration across care settings. Responding to the Interoperability Roadmap from the Office of the National Coordinator, the model enables the inclusion of community and home, and clinical and social care in formal and informal settings.

## POSTER SESSIONS

Poster sessions will provide further opportunities to cover peer-reviewed reports and discuss them with the authors. These sessions will take place from 8-8:45 a.m. and 4:15-5 p.m. on Thursday, July 21.



# ATTENDEE INFORMATION

## Welcome to the University of Maryland School of Nursing!

### CONTINUING EDUCATION FOR NURSES

**In-person: 16.0 contact hours**

**Webcast: 12.75 contact hours**

Nurses may receive up to 16.0 contact hours for successfully completing SINI 2016 Continuing Nursing Education (CE) activities. Successful completion requires participants to attend designated CE activity sessions, complete and submit the attendance verification form (provided in program packet) for those CE sessions attended, and complete the online SINI program evaluation. Those attending by webcast may receive up to 12.75 hours by returning the completed verification form that was sent via email.

- Wednesday, July 20: 7.0 CE/webcast: 5.25 CE
- Thursday, July 21: 5.5 CE/webcast: 4.0 CE
- Friday, July 22: 3.5 CE /webcast: 3.5 CE

Within 2-4 weeks of submitting your completed documents, the University of Maryland School of Nursing will email you a CE certificate. All documents and requests for CE certificates must be received within 90 days of this activity.

The University of Maryland School of Nursing is accredited as a provider of continuing nursing education by the American Nurses Credentialing Center's Commission on Accreditation.

### CONFLICT OF INTEREST DISCLOSURES

The University of Maryland School of Nursing requires that all individuals involved in the planning and presentation of Continuing Nursing Education (CNE) activities disclose all relevant financial relationships with any commercial interest and that all conflicts of interest be resolved prior to the start of the educational activity. No conflict of interest was discovered to exist with any author, committee member, faculty member, speaker, sponsor, or staff member involved in this program.

### CYBER CAFÉ (Room 245)

Hours of Operation:

Wednesday, July 20 - 8 a.m.-7 p.m.

Thursday, July 21 - 8 a.m.-7 p.m.

Friday, July 22 - 8 a.m.-2 p.m.

### ACCESSING THE WIRELESS NETWORK

The University of Maryland School of Nursing is equipped with a wireless network, which is accessible from anywhere in the building using your laptop or mobile device. For non-University personnel, please use the following user names and passwords, which are case sensitive:

*Within School of Nursing:*

Network Name: UM Conf

User Name: sonconnect

Password: Nur\$ing

*Within SMCCC:*

Network Name: UM Conf

User Name: SMCCConf

Password: SMCGuest

### ACCESSING PRESENTATIONS ONLINE

Log on to the 2016 SINI website:

**<http://nursing.umaryland.edu/sini/presentations>**

using the following case-sensitive login information:

User Name: sini

Password: informatics

For presentations not available on the conference website, consult the speaker's contact information provided at the time of presentation and request access to the presentation materials. The website will remain active until August 20, 2016.

### LIVE TWEETING & SOCIAL SHARING



Help us spread the word about the excellent information being shared at SINI. We encourage live tweeting, social sharing, and photo blogging throughout the conference. Please tag your posts with #SINI2016.

### VOLUNTEERS

SINI conference planners are grateful for our volunteers, who are wearing a VOLUNTEER ribbon on their name badges. They are here to help and will be glad to answer questions about SINI or the School of Nursing building.

Please visit the registration desk for any questions.

# CONFERENCE PLANNING COMMITTEE

## PROGRAM CO-CHAIRS

---

**Mary Etta Mills, ScD, RN, NEA-BC, FAAN**

Professor

University of Maryland School of Nursing

**Charlotte Seckman, PhD, RN-BC, CNE**

Assistant Professor

University of Maryland School of Nursing

## COMMITTEE MEMBERS

---

**Patricia Abbott, PhD, RN, FAAN**

Director, Hillman Scholars in Innovation Program

University of Michigan School of Nursing

**Marion Ball, EdD**

Senior Advisor

Healthcare and Life Sciences Institute

IBM Research

Professor Emerita

Johns Hopkins University School of Nursing

**Kathleen Charters, PhD, RN, CPHIMS**

Clinical Information System Specialist

Office of the Assistant Secretary of Defense (Health Affairs)

TRICARE Management Activity

Office of the Chief Medical Officer

**Sarah Collins, PhD, RN**

Senior Clinical Nurse Informatician, Partners eCare

Partners Healthcare Systems

Instructor in Medicine

Harvard Medical School & Brigham and Women's Hospital

**Melinda Y. Costin, CHCIO, FHIMSS, CPHIMS**

Vice President and CIO

JPS Health Network

**Patricia C. Dykes, PhD, MA, FAAN, FACMI**

Center for Patient Safety Research and Practice

Brigham and Women's Hospital

Chair, AMIA Working Group on Nursing Informatics

**Patricia D. Franklin, PhD, RN**

Assistant Professor

Director, Professional Education

Director, Nurse Leadership Institute

University of Maryland School of Nursing

**Brian Gugerty, DNS, RN**

CEO

GIC Informatics, LLC

**Arpad Kelemen, PhD**

Associate Professor

University of Maryland School of Nursing

**Michelle Lardner, MS, RN-BC**

Deputy CIO and Chief of Clinical Informatics

Department of Clinical Research Informatics

National Institutes of Health Clinical Center

**Kathryn Lothschuetz Montgomery, PhD, RN, NEA-BC**

Associate Professor

Chair, Partnerships, Professional Education, & Practice

University of Maryland School of Nursing

**Eun-Shim Nahm, PhD, RN, FAAN**

Associate Professor

Specialty Director, Nursing Informatics

University of Maryland School of Nursing

**Ernest Opoku-Agyemang, MSN, MA, RN**

Clinical Instructor

University of Maryland School of Nursing

**Judy Ozbolt, PhD, RN, FAAN, FACMI, FAIMBE**

Visiting Professor

University of Maryland School of Nursing

**Ronald Piscotty, Jr., PhD, RN-BC**

Assistant Professor

University of Maryland School of Nursing

**Sonia Smith, BS**

Coordinator, Professional Education

University of Maryland School of Nursing

**Cathi Whelchel, MHSA, BSN, RN, NEA-BC**

Product Management/Clinical Director

McKesson

**Marisa L. Wilson, DNSc, MHSc, RN-BC**

Associate Professor and Specialty Track Coordinator,

Nursing Informatics

University of Alabama at Birmingham School of Nursing

# NETWORKING EVENTS

Meet with your colleagues for these exciting networking opportunities and learn about the latest services and technology in nursing informatics.

## Networking Reception

and visit to Davidge Hall, the nation's oldest medical school building

Wednesday, July 20  
5:45 - 7:30 p.m.

Location:  
Southern Management Corporation  
Campus Center and  
University of Maryland School of Medicine

## Welcome Luncheon

with round table  
discussions on hot topics

Wednesday, July 20  
12:45 – 1:45 p.m.

Location:  
Southern Management Corporation  
Campus Center

## Buffet Luncheon

during the Exhibitor Event

An opportunity to converse with colleagues  
and explore useful products and services

Thursday, July 21  
12:45 - 2:45 p.m.

Location:  
University of Maryland School  
of Nursing Lobby

## Social Event Reception

Big Mao Trio  
Music, food, and networking

Thursday, July 21  
5:15 - 7 p.m.

Location:  
Southern Management  
Corporation Campus Center



Tweet your conference experience at

**#SINI2016**

# PLENARY SPEAKERS

## KEYNOTE SPEAKER

---



### MARY ALICE ANNECHARICO, MS, RN

Senior Vice President and Chief Information Officer  
Henry Ford Health System

#### **Network Integration of Informatics Technologies**

Mary Alice Annecharico, MS, RN, is senior vice president and chief information officer for the Henry Ford Health System. She has an extensive nursing leadership background in the transformation of clinical and business environments through the use of technology. Annecharico also served as chief information officer for the University of Pennsylvania School of Medicine and University Hospitals of Cleveland. In collaboration with academic colleagues, peer institutions, and industry leaders, she has worked to develop privacy, security, and clinical research standards for academic organizations. Her current responsibilities at the Henry Ford System include strategic planning; delivery and support of integrated delivery systems, including the Project Helios revenue cycle; electronic health record; physician and patient portals; and information technology improvement services. Annecharico is highly regarded for her ability to transform information technology services into highly effective, cross-disciplinary teams responsible for using technology resources to improve services and realize strategic organizational goals. She is actively involved in national efforts to create a sustainable, secure, statewide health information exchange that offers interoperability between regional and national health information networks to provide access to clinical data and improved measurable health outcomes. Annecharico is a fellow in the Health Information Systems Society and editor of the *Journal of Health Information Management*.

## ENDNOTE SPEAKER

---



### MARY BETH MITCHELL, MS, RN

Chief Nursing Information Officer  
Texas Health Resources

#### **Informatics Leadership in a Dynamic Healthcare Environment**

Mary Beth Mitchell, MS, RN, is the chief nurse information officer for Texas Health Resources, a 14-hospital not-for-profit, faith-based organization in North Texas. She has worked in nursing informatics for more than 15 years at the hospital and corporate levels. In her current role, Mitchell oversees the nursing adoption, utilization, and optimization of the electronic health record for all hospitals within the Texas Health Resources system. She has developed and managed SuperUser and nursing informatics programs within the hospital setting. She serves as the liaison for information technology related nursing projects and chairs the Texas Health Resources System's Nursing Informatics Council. Mitchell holds a master's degree in nursing from the University of Texas at Austin, earned a postgraduate certificate in nursing informatics from Duke University, and is certified in nursing informatics. She has delivered presentations nationally on nursing's use of the electronic health record and professional practice in nursing informatics. Mitchell is the recipient of the Texas Health Resources System's 2006 Advancing Systemness through Information Management award and was a semi-finalist for the 2012 Healthcare Informatics Innovator Award. She currently chairs the Health Information Systems Society's Nursing Informatics Committee, is a member of the board of the Dallas-Fort Worth Chapter of the American Nurses Informatics Association, and is part of the initial team that started a Nursing Informatics Community in the Dallas-Fort Worth area.

## DISTINGUISHED LECTURERS

---



### BONNIE WESTRA, PHD, RN, FAAN, FACMI

Associate Professor, Center for Nursing Informatics  
University of Minnesota School of Nursing

#### **Big Data at the Interdisciplinary Level to Improve Care**

Dr. Westra is an associate professor at the University of Maryland School of Nursing and director for the Center for Nursing Informatics. Her informatics research includes terminology development, application, and evaluation; knowledge discovery in databases; predictive analytics for outcomes; and evaluating and deriving new evidence based guidelines from electronic health record (EHR) data. She leads an interprofessional team to develop information models from flowsheets to extend common data models for comparative effectiveness research. She is co-chair of the Architecture and Informatics Committee for the University of Minnesota's Clinical and Translational Science Award grant, responsible for development of a clinical data warehouse and tools for researchers to access EHR data. Westra was involved in a 10-site Patient Centered Outcomes Research Institute grant developing a common data model and data standardization. She co-leads a national initiative (Nursing Knowledge: Big Data Science) for comparable and sharable nurse-sensitive data to extend big data for data science (<http://z.umn.edu/nbd2k>). The work includes 12 national virtual working groups with annual meetings to report progress.



### SHAHRAM EBADOLLAHI, PHD

Vice President, Innovations & Chief Science Officer  
IBM Watson Health

#### **Computational Healthcare and Data Driven Analytics**

Dr. Shahram Ebadollahi is the vice president, Innovations and the chief science officer, IBM Watson Health Group. As the head of Innovations, he oversees development, solutions, and strategic partnerships for IBM Watson Health business unit. In his capacity as the chief scientific officer, he has global responsibility for the innovation and technical strategy for IBM Watson Health and the global health informatics research in IBM Research.

Prior to joining IBM Watson Health in April 2015, Dr. Ebadollahi was the global leader of health informatics research in IBM. He and his team of scientists across IBM Research have conducted research in the broad area of health informatics with a specific focus on computational healthcare and also have enabled software and services in the area of data-driven analytics and big data for health care and life sciences applications. His pioneering work in computational health care has become one of the key underpinnings of the strategy and direction of IBM Watson Health.

Dr. Ebadollahi joined IBM as a research scientist in 2005. Prior to that he received his PhD and MS degrees in electrical engineering from Columbia University with specialization in multi-modal content analysis and retrieval and their applications to the domain of medicine. He has served as adjunct faculty at Columbia University and also has served on thesis committees of several doctoral students in the areas of medical imaging or multimedia analysis. He has numerous publications and patents in the areas of multimedia content analysis, medical imaging, and health care analytics, and he is a frequent speaker at various scientific events.



### ANN O'BRIEN, MSN, RN, CPHIMS

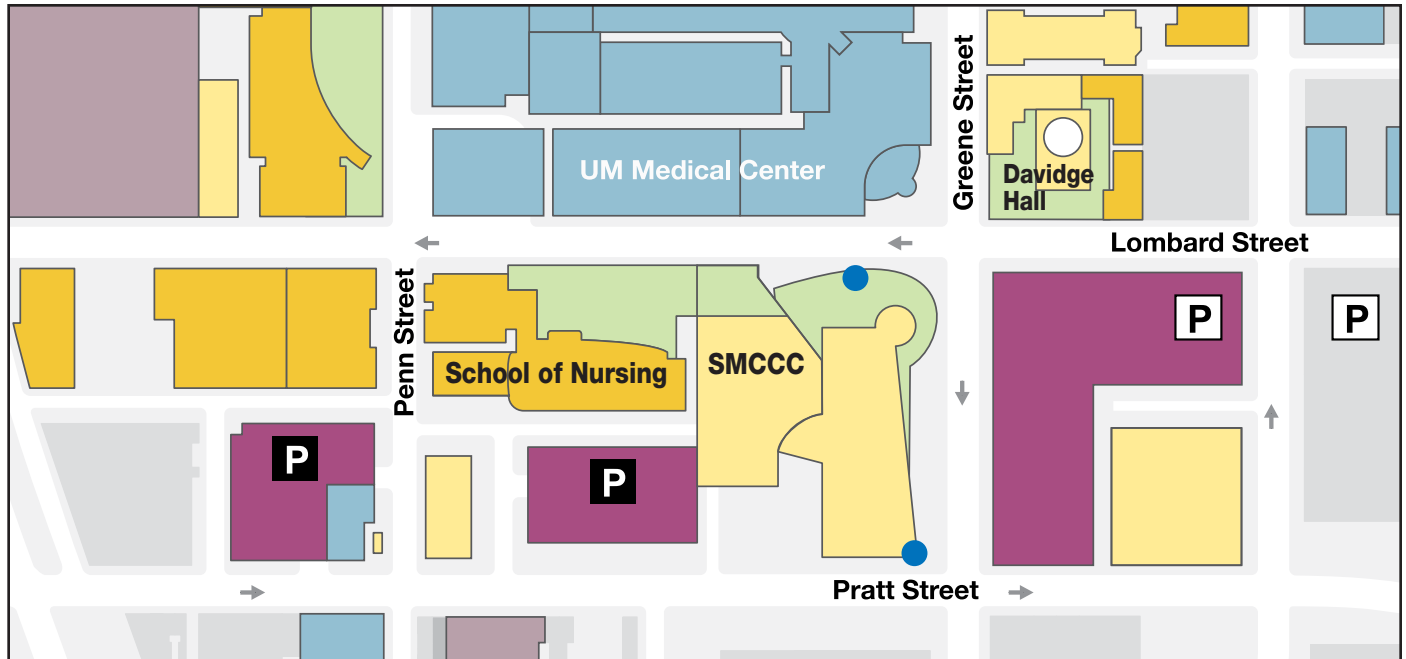
Senior Director of Clinical Informatics  
KPIT Care Delivery Business Information Office

#### **Transforming Information Systems to Meet Enterprise-Wide Goals**

Ann O'Brien is the national senior director of clinical informatics at Kaiser Permanente, an integrated delivery system that includes 39 hospitals and over 50,000 nurses. O'Brien's leadership role leverages EHR data, analytics, and innovative technology to transform nursing care processes and improve outcomes. She leads a clinical transformation program that includes a portfolio of initiatives in the areas of optimization, technology adoption, biomedical device integration, performance improvement, and value realization.

O'Brien's passion is improving nursing documentation with augment intelligence to provide evidence based, personalized care and accurate data for outcomes improvement and clinical efficiency.

# SCHOOL OF NURSING CAMPUS MAP



## PRECONFERENCES

TUESDAY • JULY 19, 2016

8:15 a.m. - 5 p.m.	<b>Preconferences (6.5 CE)</b>	
	<b>Nursing Informatics Certification Review</b> <b>Charlotte A. Seckman, PhD, RN-BC, CNE</b> SINI 2016 Co-Chair Assistant Professor, Informatics Nurse Specialist University of Maryland School of Nursing  <b>Marisa L. Wilson, DNSc, MHSc, CPHIMS, RN-BC</b> Associate Professor and Specialty Track Coordinator, Nursing Informatics University of Alabama at Birmingham School of Nursing	Room 130
	<b>Data Analytics Toolkit: Show Me How to Use Analytics in My Practice</b> <b>Charles Gabrial, MS</b> Senior Manager Department of Defense, Health Agency  <b>Kathleen Charters, PhD</b> Clinical Information System Specialist Office of the Assistant Secretary of Defense (Health Affairs) TRICARE Management Activity Office of the Chief Medical Officer  <b>Eun-Shim Nahm, PhD, RN, FAAN</b> Associate Professor Specialty Director, Nursing Informatics University of Maryland School of Nursing  <b>Kristin L. Seidl, PhD, RN</b> Clinical Data Scientist University of Maryland Medical Center	Room 245



# CONFERENCE PROGRAM

The SINI 2016 Program is color-coded to distinguish the following tracks:

Tracks open to participants with any level of expertise:

- Track A** Clinical Informatics: Essential Knowledge and Skillsets
- Track B** Innovative Health Care Informatics Across the Spectrum of Care
- Track C** Informatics Impact on Quality, Safety, and Outcomes


Track intended for experts in nursing informatics:

- Track D** Health Information Exchange and Interoperability

**W** Designates a Webcast Session

## WEDNESDAY • JULY 20, 2016

8 - 9:30 a.m.	<b>Registration and Continental Breakfast</b>	UMSON Lobby
8:30 - 9	<b>Information Session about UMSON's Master's Specialty in Nursing Informatics</b>	Room 150
	<b>Tour of Shock Trauma Center (Limited to 10 people)</b>	Sign up at the registration table
8:30 - 9:15	<b>How to Prepare a Professional Presentation (0.75 CE)</b>	Room 140
8:30 - 9:15	<b>Tours of UMSON Simulation Laboratories and Living History Museum</b>	Sign up at the registration table
9:30 - 10	<b>Welcome, Opening Remarks, and Presentation of Outstanding Abstract Awards <b>W</b></b> <b>Jane M. Kirschling, PhD, RN, FAAN</b> Dean and Professor University of Maryland School of Nursing <b>Mary Etta Mills, ScD, RN, NEA-BC, FAAN</b> Professor and Co-Chair, SINI 2016 Planning Committee University of Maryland School of Nursing <b>Charlotte Seckman, PhD, RN-BC, CNE</b> Assistant Professor and Co-Chair, SINI 2016 Planning Committee University of Maryland School of Nursing	Room 130
10 - 11:15	<b>Keynote Address (1.25 CE)</b> <b>Network Integration of Informatics Technologies <b>W</b></b> <b>Mary Alice Annecharico, MS, RN</b> Senior Vice President and Chief Information Officer Henry Ford Health System	Room 130
11:30 a.m. - 12:30 p.m.	<b>CONCURRENT SESSION 1 (1.0 CE)</b>	
	<b>1A</b> <b>Introduction to Clinical Informatics &amp; Meaningful Use Application</b> <b>Eun-Shim Nahm, PhD, RN, FAAN</b> Professor & Specialty Director, Nursing Informatics University of Maryland School of Nursing <b>Michelle Lardner, MS, RN-BC</b> Deputy CIO & Chief of Clinical Informatics National Institutes of Health Clinical Center	Room 150
	<b>1B</b> <b>Challenges of Moving Innovation <b>W</b></b> <b>Kathleen Charters, PhD, RN, CPHIMS</b> Clinical Information System Specialist Office of the Assistant Secretary of Defense (Health Affairs) TRICARE Management Activity Office of the Chief Medical Officer	Room 130

11:30 a.m. - 12:30 p.m.	<b>CONCURRENT SESSION 1 (1.0 CE)</b>	
	<b>1C Two Peer-Reviewed Presentations</b> <b>Electronic Health Records and Patient Safety: Nurse Practitioners' Experiences in Clinical Practice</b> <b>Karen Whitt, PhD, FNP, AGN-BC</b> Assistant Professor Brigham Young University <b>Lindsay Dixon, SN</b> Research Assistant Brigham Young University <b>The Impact of Innovative Technology on Quality, Safety and Patient Outcomes</b> <b>Danielle Miller, PhD(c), MSN, RNC-OB</b> Chief Nursing Officer Infor	Room 140
	<b>1D</b> <b>Moving Beyond Facility Walls: A Community Planning Approach to Broad Scale Information Exchange</b> <b>Murriel Sabina Beene, DNP, MS, MPH, MBA, RN-BC, PMP</b> Chief Nurse Information Officer Veterans Affairs	Room 304
12:45 - 1:45	<b>Luncheon and Roundtable Discussions (1.0 CE)</b>	SMCCC Ballroom
2 - 3	<b>CONCURRENT SESSION 2 (1.0 CE)</b>	
	<b>2A</b> <b>Use Cases: What Are They? How to Develop Them?</b> <b>Patricia Sengstack, DNP, RN-BC, CPHIMS</b> Chief Nursing Informatics Officer Bon Secours Health System, Inc. <b>Seth Carlson, MS</b> Clinical Architect National Institutes of Health	Room 150
	<b>2B Two Peer-Reviewed Presentations</b> <b>Super Users and Beyond - A Proven Strategy to Prepare Nursing Informaticists</b> <b>Gwen Holder, MSN, RN-BC</b> Director Vanderbilt University Medical Center <b>A Mobile Solution for Nursing Communication</b> <b>Kathleen Lennon, MBA, RN</b> Managing Director Accenture <b>Frances Dare, MBA</b> Managing Director Accenture	Room 140
	<b>2C</b> <b>Building Bridges to Quality through Health Information Exchange </b> <b>Gregory L. Alexander, PhD, RN, FAAN</b> Professor University of Missouri Sinclair School of Nursing	Room 130
	<b>2D</b> <b>Chasing the Perfect Handoff: Transforming Hospital to Skilled Nursing Facility (SNF) Handoff Communication Linking Interoperability</b> <b>Annette Brown, BSN, RN</b> Director of Nursing Informatics Eisenhower Medical Center	Room 304

3:15 - 4:15	<b>CONCURRENT SESSION 3 (1.0 CE)</b>	
	<b>3A</b> <b>Making It Stick: CIS Implementation &amp; Maintenance</b>  <b>Ruth Schleyer, MSN, RN-BC</b> Clinical Director, Informatics, Academics & Education System Office of the Chief Nursing Officer Providence Health & Services Olmsted County Public Health	Room 130
	<b>3B</b> <b>Broadband-enabled Health Technologies to Improve Population Health</b> <b>Chris Gibbons, CEO</b> The Greystone Group, Inc.	Room 150
	<b>3C Two Peer-reviewed Presentations</b>  <b>Research Podium Award Winner</b> <b>Identifying Home Care Clinicians' Information Needs to Achieve Better Care Coordination in Fall Risk Management</b> <b>Dari Alhuwail, MSc</b> PhD Candidate University of Maryland, Baltimore County <b>Gunes Koru, PhD</b> Associate Professor University of Maryland, Baltimore County <b>The Nature of Turbulence and Workload: Conceptual and Operational Clarification</b> <b>Jennifer Browne, MSN, RN-BC, CCRN</b> Instructor Incarnate Word University, School of Nursing <b>Carrie Jo Braden, PhD, RN, FAAN</b> Associate Dean University of Texas Health Science Center San Antonio	Room 140
	<b>3D</b> <b>Health Information Exchange Shaped by Community Needs – Examples from School Health and Local Public Health</b> <b>Lisa Klotzbach, MA, RN, PHN, BAN, LHIT</b> Leadership in Health Information Technology Senior Public Health Nurse Olmsted County Public Health	Room 304
4:30 - 5:30	<b>Distinguished Lecture (1.0 CE)</b> <b>Big Data at the Interdisciplinary Level to Improve Care</b>  <b>Bonnie Westra, PhD, RN, FAAN, FACMI</b> Associate Professor, Center for Nursing Informatics University of Minnesota School of Nursing	Room 130
5:45 - 7:30	<b>Networking Reception</b>	SMCCC
6:30 & 7	<b>Visit Davidge Hall</b> , the nation's oldest medical school building. University of Maryland School of Medicine	Davidge Hall


Tracks open to participants with any level of expertise:

- Track A** Clinical Informatics: Essential Knowledge and Skillsets
- Track B** Innovative Health Care Informatics Across the Spectrum of Care
- Track C** Informatics Impact on Quality, Safety, and Outcomes

Track intended for experts in nursing informatics:

- Track D** Health Information Exchange and Interoperability

# THURSDAY • JULY 21, 2016


7:15 - 8 a.m.	<b>Poster &amp; Exhibitor Setup</b>	UMSON Lobby
8 - 8:45	<b>Poster Session 1 (0.75 CE)</b>	UMSON Lobby
8 - 9	<b>Registration and Continental Breakfast</b>	UMSON Lobby
8:30 - 9	<b>Information Session about UMSON's Master's Specialty in Nursing Informatics</b>	Room 150
9 - 11:30	<b>Sponsor/Exhibit Check-in and Setup</b>	UMSON Lobby
9 - 10	<b>Distinguished Lecture (1.0 CE)</b> <b>Computational Healthcare and Data Driven Analytics</b>  <b>Shahram Ebadollahi, PhD</b> Vice President, Innovations & Chief Science Officer IBM Watson Health	Room 130
10:15 - 11:15	<b>CONCURRENT SESSION 4 (1.0 CE)</b>	
	<b>4A</b> <b>Enabled, Engaged, and Empowered (E3) Patients: Future of Care Delivery</b>  <b>Jud Simonds MSN, RN, NE-BC</b> Chief Nurse Informatics Officer/Regional Director Nursing & Clinical Informatics Providence Health & Services	Room 130
	<b>4B Two Peer-Reviewed Presentations</b> <b>Statewide Study on Meaningful Use-based Nurses Experience Using the Electronic Health Record</b> <b>Mari Tietze, PhD, RN-BC, FHIMSS</b> Associate Professor Texas Woman's University <b>Susan McBride, PhD, RN-BC, CPHIMS</b> Professor Texas Tech University Health Sciences Center <b>The Effect of Education on Portal Personal Health Record Use</b> <b>Imke Casey, DNP, CRNA, RHIT</b> Health Information Technology Instructor Lake-Sumter State College <b>Rebecca Kitzmiller, PhD, MHR, RN-BC</b> Assistant Professor University of North Carolina Chapel Hill <b>Jeanne Sewell, MSN, RN, BC</b> Associate Professor Georgia College and State University	Room 150
	<b>4C</b> <b>Intravenous Medication Errors Related to SMART Infusion Pumps: A Multi-Hospital Observational Study</b> <b>Kumiko O. Schnock, PhD, RN</b> Brigham & Women's Hospital Harvard Medical School	Room 140

Tracks open to participants with any level of expertise:

- Track A** Clinical Informatics: Essential Knowledge and Skillsets
- Track B** Innovative Health Care Informatics Across the Spectrum of Care
- Track C** Informatics Impact on Quality, Safety, and Outcomes

Track intended for experts in nursing informatics:

- Track D** Health Information Exchange and Interoperability

10:15 - 11:15	<b>CONCURRENT SESSION 4 (1.0 CE)</b>	
	<b>4D</b> <b>The Community Planning Model: An Introduction</b> <b>Marisa Wilson, DNSc, MHSc, RN-BC</b> Associate Professor & Specialty Track Coordinator, Nursing Informatics University of Alabama at Birmingham School of Nursing  <b>Paula Procter, MSc, RN, PGCE, MSC, SFHEA, FBCS, CITP, FIMIANI</b> Reader in Informatics and Telematics in Healthcare, Department of Nursing and Midwifery, Faculty of Health and Wellbeing Sheffield Hallam University, United Kingdom	Room 304
11:30 a.m. - 12:30 p.m.	<b>CONCURRENT SESSION 5 (1.0 CE)</b>	
	<b>5A</b> <b>CIS Implementation: Show Me the Outcomes and \$\$\$!!</b> <b>Donna Montgomery, MBA, BSN, RN-BC</b> Vice President of Nursing Informatics & Clinical Excellence Baylor Scott & White Health-NTX Region	Room 140
	<b>5B Two Peer-Reviewed Presentations</b> <b>The Electronic Health Record as a Research Lab: Leveraging Big Data to Improve Military Health Outcomes</b> <b>Lalon Kasuske, MBA, RN</b> Doctoral Candidate Uniformed Services University of the Health Sciences  <b>Governance, Optimization and Product Development Model for a Diverse Medical System</b> <b>Benjamin Laughton, MSN, MBA</b> Director of Clinical Informatics University of Maryland Medical Center  <b>Malinda Marroquin, MS</b> Manager University of Maryland Medical Center	Room 150
	<b>5C</b> <b>MySafeCare: An Application for Patients and Families to Report Safety Concerns</b>  <b>Sarah Collins, PhD, RN</b> Partners Healthcare Systems	Room 130
	<b>5D</b> <b>Developing the Community Planning Model – Part 1 (Facilitated Group)</b> <b>Marisa Wilson, DNSc, MHSc, RN-BC</b> Associate Professor & Specialty Track Coordinator, Nursing Informatics University of Alabama at Birmingham School of Nursing  <b>Paula Procter, MSc, RN, PGCE, MSC, SFHEA, FBCS, CITP, FIMIANI</b> Reader in Informatics and Telematics in Healthcare, Department of Nursing and Midwifery, Faculty of Health and Wellbeing Sheffield Hallam University, United Kingdom	Room 304
12:45 - 2:45	<b>Buffet Luncheon &amp; Exhibitor Event</b>	UMSON Lobby

3 - 4	<b>CONCURRENT SESSION 6 (1.0 CE)</b>	
	<b>6A</b> <b>Data Analytics: Applications in Clinical Settings</b> <b>W</b> <b>LaVerne Perlie, MSN</b> Nurse Consultant Office of the National Coordinator for Health Information Technology  <b>Helen Caton-Peters, MSN, RN</b> Senior Policy Analyst Office of the National Coordinator for Health Information Technology	Room 130
	<b>6B</b> <b>Information Visualization: Opportunities for Analysis of Temporal Patterns and Medication Reconciliation</b> <b>Catherine Plaisant, PhD</b> Senior Research Scientist Human Computer Interaction Lab University of Maryland, College Park	Room 140
	<b>6C Two Peer-Reviewed Presentations</b> <b>Smart Pump Interoperability: An Overview Focusing on Potential Benefits and Risk to Nursing Practice</b> <b>Stephanie Norman, MSN</b> Director Children's Hospital of Alabama  <b>Nursing Management of Restraints: Incorporating Clinical Decision Support (CDS) Tools into Flowsheet Design to Reduce Documentation Gaps, Improve Quality Data Collection, and Achieve Regulatory Compliance</b> <b>Onyekachi Festus, RN</b> Nursing Informatics Liaison Robert Wood Johnson University Hospital  <b>Selena McClinton, BSN, RN</b> Assistant Director of Nursing Informatics Robert Wood Johnson University Hospital	Room 150
	<b>6D</b> <b>Developing the Community Planning Model – Part 2</b> (Facilitated Group) <b>Marisa Wilson, DNSc, MHSc, RN-BC</b> Associate Professor & Specialty Track Coordinator, Nursing Informatics University of Alabama at Birmingham School of Nursing  <b>Paula Procter, MSc, RN, PGCE, MSC, SFHEA, FBCS, CITP, FIMIANI</b> Reader in Informatics and Telematics in Healthcare, Department of Nursing and Midwifery, Faculty of Health and Wellbeing Sheffield Hallam University, United Kingdom	Room 304
4:15 - 5	<b>Poster Session 2 (0.75 CE)</b>	UMSON Lobby
5:15 - 7:30	<b>Social Event: Music, food, networking</b>	SMCCC Ballroom

Tracks open to participants with any level of expertise:


- Track A** Clinical Informatics: Essential Knowledge and Skillsets
- Track B** Innovative Health Care Informatics Across the Spectrum of Care
- Track C** Informatics Impact on Quality, Safety, and Outcomes

Track intended for experts in nursing informatics:

- Track D** Health Information Exchange and Interoperability



# FRIDAY • JULY 22, 2016

8 - 9:45 a.m.	<b>Registration and Continental Breakfast</b>	UMSON Lobby
8:30 - 9:45	<b>Distinguished Lecture (1.25 CE)</b> <b>Transforming Information Systems to Meet Enterprise-Wide Goals</b>  <b>Ann O'Brien, MSN, RN, CPHIMS</b> Senior Director of Clinical Informatics KPIT Care Delivery Business Information Office	Room 130
10 - 11	<b>CONCURRENT SESSION 7 (1.0 CE)</b>	
	<b>7A</b> <b>Panel: Becoming a Competent Nursing Informatician and Beyond!</b> <b>Moderator: Eun-Shim Nahm, SAAN, PhD, RN, FAA</b> Professor & Specialty Director, Nursing Informatics University of Maryland School of Nursing <b>Ernest Opoku-Agyemang, MSN, MA, RN</b> Clinical Instructor University of Maryland School of Nursing <b>Charlotte Seckman, PhD, RN-BC, CNE</b> Assistant Professor and Co-Chair, SINI 2016 Planning Committee University of Maryland School of Nursing <b>Ruth Schleyer, MSN, RN-BC</b> Clinical Director, Informatics, Academics & Education System Office of the Chief Nursing Officer Providence Health & Services <b>Benjamin Laughton, MBA, MSN, CRNP</b> Senior Director of Clinical Informatics University of Maryland Medical Center <b>Michelle Lardner, MS, RN-BC</b> Deputy CIO & Chief of Clinical Informatics National Institutes of Health Clinical Center	Room 140
	<b>7B Two Peer-Reviewed Presentations</b> <b>Exploring Population Health with a COPD Dashboard</b> <b>Joyce Maygers, DNP, RN</b> Clinical Outcomes Coordinator Johns Hopkins Bayview Medical Center <b>Etter Hoang, MHA</b> Business Intelligence Manager Johns Hopkins Bayview Medical Center <b>Bedside Scanning Verification of Telemetry Monitors</b> <b>Steven McPherson, RN</b> Senior OM/PCM Clinical Analyst Union Hospital of Cecil County	Room 150

Tracks open to participants with any level of expertise:

- Track A** Clinical Informatics: Essential Knowledge and Skillsets
- Track B** Innovative Healthcare Informatics Across the Spectrum of Care
- Track C** Informatics Impact on Quality, Safety, and Outcomes

rack intended for experts in nursing informatics:

- Track D** Health Information Exchange and Interoperability

10 - 11	<p><b>CONCURRENT SESSION 7 (1.0 CE)</b></p> <div> <div>7C</div> <div>Two Peer-Reviewed Presentations </div> </div> <div>  <div>Practice Podium Award Winner</div> </div> <p><b>EHR Downtime/Recovery Planning: Panic Prevention</b></p> <p><b>Flo Mielcarek, MSMIS, RN-BC</b> Clinical Ops Informatics Manager Aurora Health Care</p> <p><b>Kathleen Gall, MS, RN, NE-BC</b> Retired Aurora Health Care</p> <p><b>Martha Badger, MSN, RN-BC, CPHIMS</b> Operations Informatics Analyst Senior Aurora Health Care</p> <p><b>An Evidence-Based Evaluation of Medication Barcode Scanning Acceptance in a Community Hospital</b></p> <p><b>Marie Vanderkooi, DNP, MSN, RN-BC</b> Assistant Professor Kirkhof College of Nursing, Grand Valley State University</p> <p><b>Brian Brasser, MSA, BSN, RN, FACHE</b> President Spectrum Health United &amp; Kelsey Hospitals</p> <p><b>Cynthia Coviak, PhD, RN, CNE</b> Professor Kirkhof College of Nursing, Grand Valley State University</p> <p><b>Guenter Tusch, PhD, RN, CNE</b> School Computing &amp; Information Systems</p> <p><b>Barbara Hooper, DNP, MSN, RN, NE-BC</b> Kirkhof College of Nursing, Grand Valley State University</p>	Room 130
	<div>7D</div> <p><b>Feedback and Reflection from Community Planning Model Development &amp; Conclusion (Facilitated Group)</b></p> <p><b>Marisa Wilson, DNSc, MHSc, RN-BC</b> Associate Professor &amp; Specialty Track Coordinator, Nursing Informatics University of Alabama at Birmingham School of Nursing</p> <p><b>Paula Procter, MSc, RN, PGCE, MSC, SFHEA, FBCS, CITP, FIMIANI</b> Reader in Informatics and Telematics in Healthcare, Department of Nursing and Midwifery, Faculty of Health and Wellbeing Sheffield Hallam University, United Kingdom</p>	Room 304
11:15 a.m. - 12:30 p.m.	<p><b>Endnote Address (1.25 CE)</b></p> <p><b>Informatics Leadership in a Dynamic Healthcare Environment </b></p> <p><b>Mary Beth Mitchell, MSN, RN-BC, CPHIMS</b> Chief Nursing Information Officer Texas Health Resources</p>	Room 130
12:30 - 1	<p><b>Closing Remarks and Announcement of People's Choice Award </b></p> <p><b>Mary Etta Mills, ScD, RN, NEA-BC, FAAN</b> Professor and Co-Chair, SINI 2016 Planning Committee University of Maryland School of Nursing</p> <p><b>Charlotte Seckman, PhD, RN-BC, CNE</b> Assistant Professor and Co-Chair, SINI 2016 Planning Committee University of Maryland School of Nursing</p>	Room 130

# POSTER SESSIONS

*Be sure to cast your vote for the People's Choice Poster Award!  
Turn in your ballot at the registration desk before the endnote presentation.*

## Track A:

### Clinical Informatics: Essential Knowledge and Skillsets

- 1. Everything Needed but Nothing Else - A Successful Nursing Documentation Reduction Process**  
Nicole Callender, BSN, RN  
Heather Knott, BSN, RN  
Angela Swinger-Lockridge, BSN, RN
- 2. Maintaining Adolescent Access and Confidentiality with a Custom Patient Portal**  
Irene Chen, BA  
Elizabeth Bennett, BA  
Lee Williams, MSN, RN-BC  
Fabienne Bourgeois, MD, MPH
- 3. Staying Alive? Maintaining Survival Post-EMR (Electronic Medical Record)**  
Stacy Kreger, MPH, BSN, CEN  
Debbie Heckler, MSN, BSN  
Lisa-Marie Williams, RN
- 4. Evaluation of DNP Students' Competencies in an Online Informatics Course**  
Barbara Kupferschmid, PhD, RN  
Connie Creech, EdD, RN, ANP-BC  
Marilyn Filter, PhD, RN, CNM  
Christina Aplin-Kalisz, DNP, FNP-BC
- 5. A Mother's Day Downtime**  
Stephanie Philo, MSN, RN-BC
- 6. Incorporating Clinical Decision Support Tools in Nursing Forms**  
Clarissa Salcedo, MS, RN-BC  
Carol Jepsen-Brown, MS, RN
- 7. Connecting Professional Practice and Technology at the Bedside: Nurses' Beliefs About Using an Electronic Health Record and Their Ability to Incorporate Professional Patient Centered Care**  
Melissa Gomes, PhD, APRN, PMHNP-B  
Pamela Hash, DNP  
Andrea Mazzocchi, PhD, RN, FAAN  
Aimee Watkins, MSN, FNP-BC  
Liana Orsolini, PhD, RN, ANEF, FAA
- 8. Using an Academic EHR to Infuse Informatics and FLIP the Lab**  
Nicole Smith, MS, RN  
Mary Pat Ulicny, MS, MHA, RN, CNE

## Track B:

### Innovative Health Care Informatics Across the Spectrum of Care

- 9. The Role of Nursing Informatics on the Collaborative Implementation Team: Secondary Telemetry Alarm Management - Using Smart Phone Technology**  
You Chung, MSN, RN-BC, CCRN  
MaryAnn Connor, MS, RN-BC, CPHIMS  
Kathleen Short, MSN, CNS, AOCN, AO  
Tony Hurtado
- 10. M2SEWS Early Warning System & Proactive Screening Provides Early Intervention & Escalates Care**  
Patricia McCabe, MSN, RN, CCRN  
Janet Thorne, MGA, RN  
Suzanne Wilson, MS  
Andrea Ryan, MSN, RN  
Molly Sarumi, MD  
Hank Rappaport, MD  
Joseph Blumenthal, MS
- 11. Use of a Predictive Tool, the Rothman Index, to Reduce 30-day Readmissions**  
Lynn Motz, NP
- 12. Using Technology to Improve Care Transitions**  
Cheryl McKay, PhD, RN  
Jeanette Polaschek, MSN, MS, RN
- 13. A Whole New Way to Think About A Rapid Response**  
Kara Theal, MA, BSN, RN-BC

**Track C:**  
**Informatics Impact on Quality, Safety, and Outcomes**



**Practice Poster Award Winner**

**14. Leveraging Data Analytics to Investigate the Relationship Between Patient Demographic and Falls in Home Care**

Uchenna Uchidiuno, MHMS  
Gunes Koru, PhD  
Pooja Parameshwarappa, MSc  
Dari Alhuwail, MSc



**Research Poster Award Winner**

**15. Use of Documentation in the Patient Record for Interprofessional Communication and Collaborative Decision-Making: Implications for the Reduction of CLABSI**

Jennifer Thate, MSN, RN, CNE  
Brittany Couture, BS  
Sarah Collins, PhD, RN

**16. Bridging the Gap Between IT and Patient Care Services through Rounding**

Lynne Bittner, MS, RN-BC  
Danielle Potter, BBA, BSN, RN

**17. Perceived Value and Clinical Effectiveness of the Plan of Care in the Electronic Environment**

Grant Campbell, MSN, RN

**18. Breast Milk Barcoding for Enhanced Patient Safety**

Balasubramanian Kulandaivel, MSN, RN-BC  
Deborah Shoup, MSN, RN

**19. Utilizing the EHR to Overcome Barriers of a Routine HIV Testing and Linkage to Care Program**

Lucy Miner, BSN, RN, PCCN  
Jamie Mignano, MPH, MSN, RN  
Christina Cafeo, DNP, RN, CENP  
Daniel Lemkin, MD, FACEP  
Mangla Gulati, MD, FACP, SFHM  
Lisa Rowen, DNSc, RN, CENP, FAAN

**20. Use of Data Mining to Improve Cardiovascular Disease Risk and Veteran Health Outcomes**

Shannon Munro, PhD  
Elizabeth Crockett, BS, MCA/DSS  
Jasbir Mavi, MD

**21. Improvement of the Process for Capturing Resuscitation Status Decision and Discussion**

Tim O'Connor-Crowe, MSHI, MPH, CPHT  
Thomas Baccari, RN

**22. Albany Medical Center RN's Perception of the Soarian Electronic Plan of Care: One Year Follow-up**

Susan Dillon, MS, MEd, RN-BC, CNML  
Margie Lee, MS, RN

**23. Accurate, Easy to Use, Useful? Hospice and Home Health Nurses' Perceptions of the EHR**

Dorothea Winter, PhD, RN

**Track D:**  
**Health Information Exchange and Interoperability**

**24. Interoperability between EMR and Medication Dispensing Cabinet-Nursing Workflow Impact**

Marie Kozel, MBA, BSN

**25. Interoperability in Action: Leveraging the Power of Health Information Exchanges to Improve Transitions of Care**

Heather McAuliffe, BSN, RN  
Bonnie Davis, BSN, RN

**26. Exploration of Handoffs during Transitions of Care Involving Intensive Care Unit Patients: An Integrative Review**

Nakia Best, MSN, RN, CNL  
Debbie Travers, PhD, RN, FAEN  
Rebecca Kitzmiller, PhD, MHR, RN, BC  
Meg Zomorodi, PhD, RN, CNL

**27. Affirming Proposed Variable Relationship Patterns in a Conceptual Model by Converting Qualitative Data to Causal Loop Diagrams**

Jennifer Browne, MSN, RN-BC, CCRN  
Carrie Jo Braden, PhD, RN, FAAN

# SPONSORS AND EXHIBITORS

*We are grateful for the generous support of our SINI 2016 sponsors and exhibitors.*

## Sustaining Donors

---

# UMBC

AN HONORS UNIVERSITY IN MARYLAND

## Health IT Graduate Program

### University of Maryland Baltimore County (UMBC)

Lisa Gambino  
gambino@umbc.edu  
1000 Hilltop Cir.  
Baltimore, MD 21250  
Phone: 410-455-3034



## UNIVERSITY of MARYLAND MEDICAL CENTER

### University of Maryland Medical Center

Jordan Dunham  
jdunham@umm.edu  
22 S. Greene St.  
Suite GLK01  
Baltimore, MD 21201  
Phone: 410-328-1184

## Bag Sponsor

### Orion Health

Andrea Weiss  
Andrea.weiss@orionhealth.com  
7350 East Evans Rd.  
Scottsdale, AZ 85260  
Phone: 602-753-0811  
[www.orionhealth.com/us](http://www.orionhealth.com/us)

## Pen Sponsor

### Infor Healthcare

Tara Waldron  
Tara.waldron@infor.com  
641 Avenue of the Americas  
New York, NY 10011  
Phone: 651-767-6142  
[www.infor.com/industries/healthcare](http://www.infor.com/industries/healthcare)

## Exhibitors

---

### Ancile

Julie Brown  
Julie.brown@ancile.com  
6085 Marshalee Drive  
Elkridge, MD 20175  
Phone: 443-561-3934

### American Medical Informatics Association (AMIA)

Rob Rader  
rob@amia.org  
4720 Montgomery La.  
Suite 500  
Bethesda, MD 20814  
Phone: 301-657-1291

### American Nurses Credentialing Center (ANCC)

Clarke Manley  
Clarke.manley@ana.org  
8515 Georgia Ave., Suite 400  
Silver Spring, MD 20910  
Phone: 301-628-5199

### American Nursing Informatics Association (ANIA)

Tom Greene  
ania@ajj.com  
E Holly Ave. Box 56  
Pitman, NJ 08094  
Phone: 866-552-6404  
Fax: 856-589-7463

### Epic

Kahe Najduk  
knadjuk@epic.com  
1979 Milky Way  
Verona, WI 53593  
Phone: 608-271-9000

### TeleTracking Technologies

Tori Rodgers  
Tori-rodgers@teletracking.com  
336 Fourth Ave.  
Pittsburgh, PA 15222  
Phone: 412-391-7862  
Fax: 412-391-5148

### University of Maryland Bookstore

Jennifer Stevens  
Jennifer.stevens@umaryland.edu  
621 W. Lombard Street  
Baltimore, MD 21201  
Phone: 410-706-3033





# Why a Health IT Master's at **UMBC**

Fall 2016  
Application Deadline:  
**August 1**

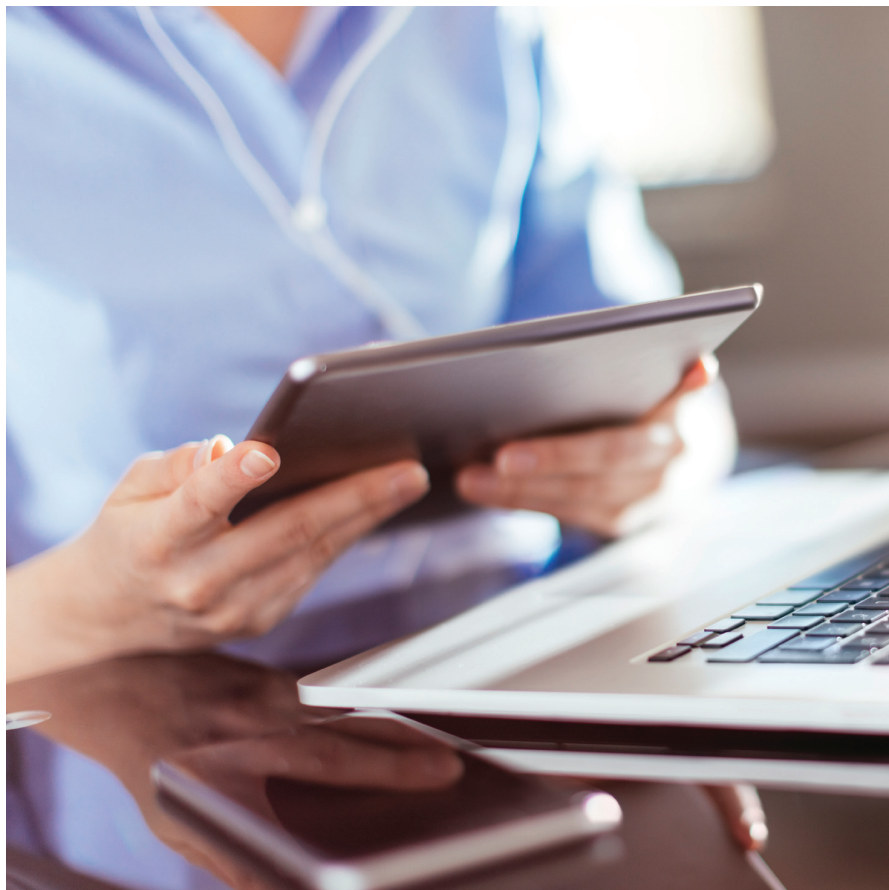
For more information, visit  
[umbc.edu/hit](http://umbc.edu/hit)



## **Nursing Informatics** is growing and so can you!

Explore RN opportunities in Clinical  
Informatics, Information Systems &  
Technology at UMMC.

Visit [umm.edu](http://umm.edu) for more  
information and to apply.



## **Save the Date!**

# SINI 2017

Clinical Practice, Health,  
and the Internet of Things



## **July 12 - 14, 2017**

<http://nursing.umaryland.edu/sini>



UNIVERSITY of MARYLAND  
SCHOOL OF NURSING



# NURSING INFORMATICS

## Complete Your Advanced Degree!

The University of Maryland School of Nursing (UMSON) was the first nursing school in the world to offer a master's specialty in informatics and a doctoral degree with a focus on informatics. For more than two decades, UMSON has offered its renowned informatics programs, and today, it remains a leader in nursing informatics educational offerings. The informatics curriculum is continually updated in response to emerging technology and the needs of the health care system.

### **Master's of Science (MS) and Post-Master's (Post-MS):**

- MS: 40 credits
- Certificate: 19 credits
- MS/MBA
- Highly individualized course plans
  - Full- or part-time
  - Comprehensive practicum

**Full online option available**

### **PhD/DNP programs with a focus in nursing informatics:**

- Doctor of Nursing Practice (Post-MS DNP):  
Completely online format (36 credits)
- Doctor of Philosophy (PhD):  
Face-to-Face format (60 credits)

The Nursing Informatics MS specialty participates in **the Academic Common Market**, meaning that students who reside in member states of the Southern Regional Education Board may request to pay in-state tuition if there is no nursing informatics program offered in a public university in their home state.

**For more information, email:**

**[informatics@son.umaryland.edu](mailto:informatics@son.umaryland.edu)**