



The Office of the National Coordinator for Health Information Technology


Health Care Information Systems and New Care Models

Andrea Hayes, MPH, BSN, RN – Nurse Consultant, ONC – Department of Health and Human Services
 Rebecca Freeman, PhD, RN, PMP – CNO, ONC – Department of Health and Human Services



Learning Objectives


- Describe the drivers for the emerging health IT landscape.
- Identify the care environments with significant health IT uptake vs. care environments that are lagging.
- Describe the barriers to movement towards an integrated, wide-ranging electronic health record.
- Contrast an individualized approach to care vs. population health management.
- Identify the key advances in alternative payment models, behavioral health, and telehealth.



2



Changing Landscape of Health IT and Reimbursement (....as of 2015)

- Basically...we are growing by leaps and bounds.
 - » Is medicine a field that easily adapts to rapid change?
- 87% of office-based physicians have an EHR
 - » 2008: 42% of office-based physicians have an EHR
- 84% of all hospitals use an EHR
 - » 2008: 9% of all hospitals use an EHR
- So where are we now?
 - » Hospitals/Ambulatory
 - » Everyone else (i.e., LTPAC, Schools, Public Health)




<https://dashboard.healthit.gov/quickstats/quickstats.php>

Where are We Going? *Outside the Hospital Walls*

Changing Landscape of Health IT and Reimbursement

- Moving towards a learning health system
 - » Turn data into knowledge and knowledge into guidance
- Moving towards payment for quality/value
 - » Away from fee-for-service
 - » \$ = efficient, coordinated communication and care
 - Efficient use of Health IT
 - Interdisciplinary teamwork
 - Coordinate data and analytics
- Focus on care planning and care coordination
- 90% of physicians participating in delivery reform programs use an EHR



5

Teamwork - It Isn't As Easy As It Looks

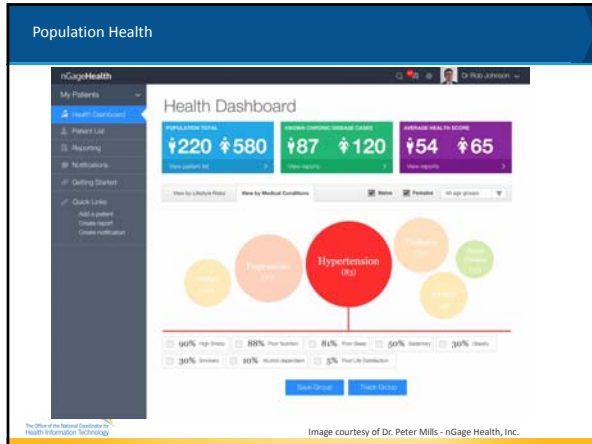


From Silos, Lack of Communication, Multiple Handoffs
 To Cross Functional Roles, High Collaboration, Results Oriented



<https://www.linkedin.com/pulse/silos-workplaces-killed-what-do-dr-karim-m-zakir>

6




- ### Alternative Payment Models: Example of a New Approach
- Oncology Care Model**
 - Provide Enhanced Services including:
 - Patient Navigation
 - Care Plan
 - Patient access, 24/7 to a clinician with real-time access to practice's medical records
 - Treatment with therapies consistent with nationally recognized guidelines
 - Use Data to Drive Continuous Quality Improvement
 - Use Certified Electronic Health Record Technology (CEHRT)
 - Practice and Technology – partners in care.**

- ### Behavioral Health a New Approach
- Integrated Behavioral Health Care Model**
 - Provide holistic care focused on the patient as whole:
 - Primary care and behavioral health clinicians, working together with patients and families
 - Decrease fragmentation of care
 - Immediate access to behavioral health specialty
 - Coordinated, co-located, integrated care
 - Security and Privacy Considerations
 - HIPAA
 - 42 CFR Part 2

- ### Telehealth - Rebecca
- "The use of electronic information and telecommunications technologies to support and promote long-distance clinical health care, patient and professional health-related education, public health and health administration."* - Health Resources and Services Administration (HRSA)
- Telemedicine vs. Telehealth
 - Uses?
 - Stroke, ICU, Hospital Rounding
 - Remote Patient Monitoring, Online Real-Time Visits
 - Provider Education
 - Behavioral Health: Teleconsult
- 

- ### Patient Generated Health Data (PGHD)
- Different from clinician-gathered data in 2 ways:
 - Patients, not providers, are responsible for capturing/recording
 - Patients direct the sharing or distributing of data to providers/stakeholders
 - Fun Stats
 - 56% insured pts, 70% of millennials - choose a PCP w/ pt mobile app
 - 93% pts would choose email communication with physician, would pay \$25 per episode
 - Patients love wearables. Physicians, depends...
 - "Clinicians can't do a lot with the number of steps you've taken in a day." – Neil Sehgal, DPH, UCSF
 - "[patients]...come in with these very large Excel spreadsheets, with all this information – I have no idea what to do with that." – Andrew Trister, MD, Oncologist at Sage Bionetworks



The Office of the National Coordinator for Health Information Technology

Questions?

andrea.hayes@hhs.gov

rebecca.freeman@hhs.gov

@ONC_HealthIT @HHSONC HealthIT.gov