



# University of Maryland School of Nursing Millicent Geare Edmunds Lecture

NOVEMBER 14, 2018

## Opioid Operational Command Center

**Speaker:**

**Birch Barron**

**Deputy Director**

**Maryland Opioid Operational Command Center**

**[birch.barron@maryland.gov](mailto:birch.barron@maryland.gov)**



Nearly **6** deaths every day in Maryland



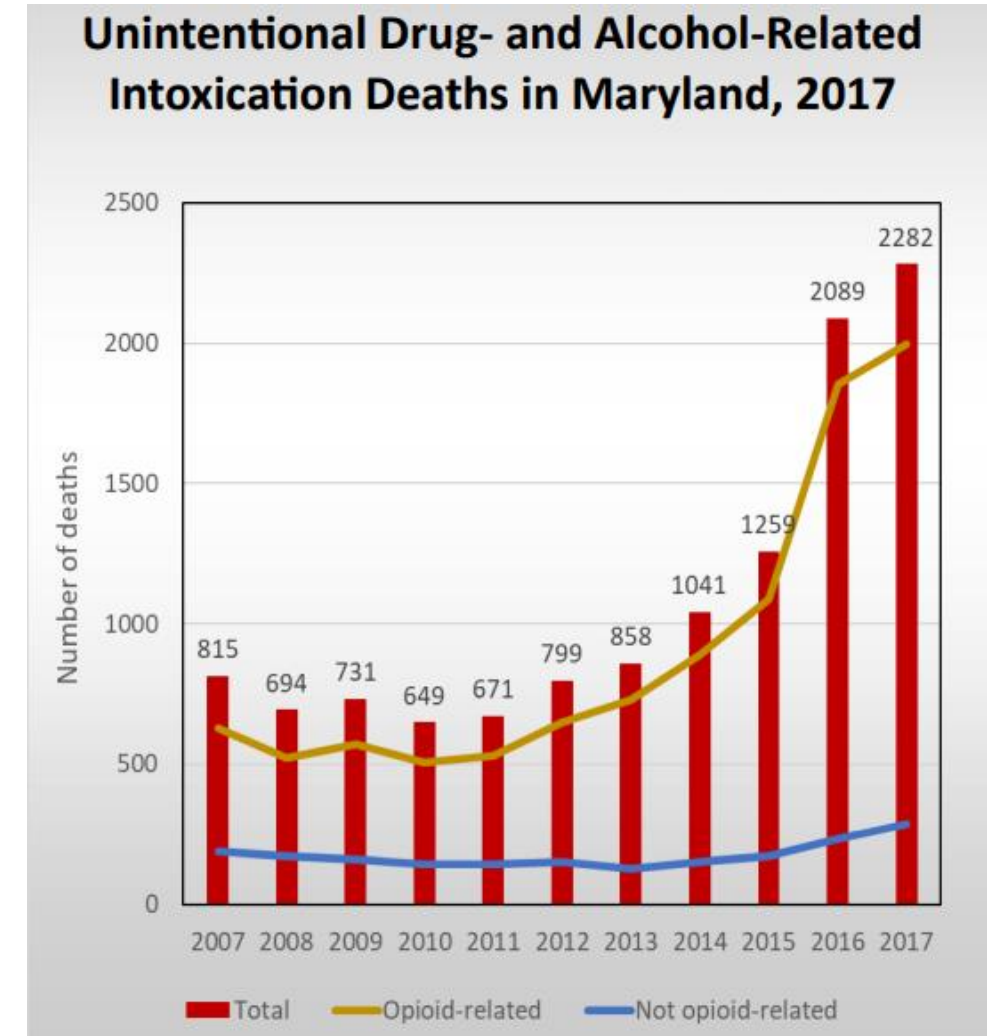
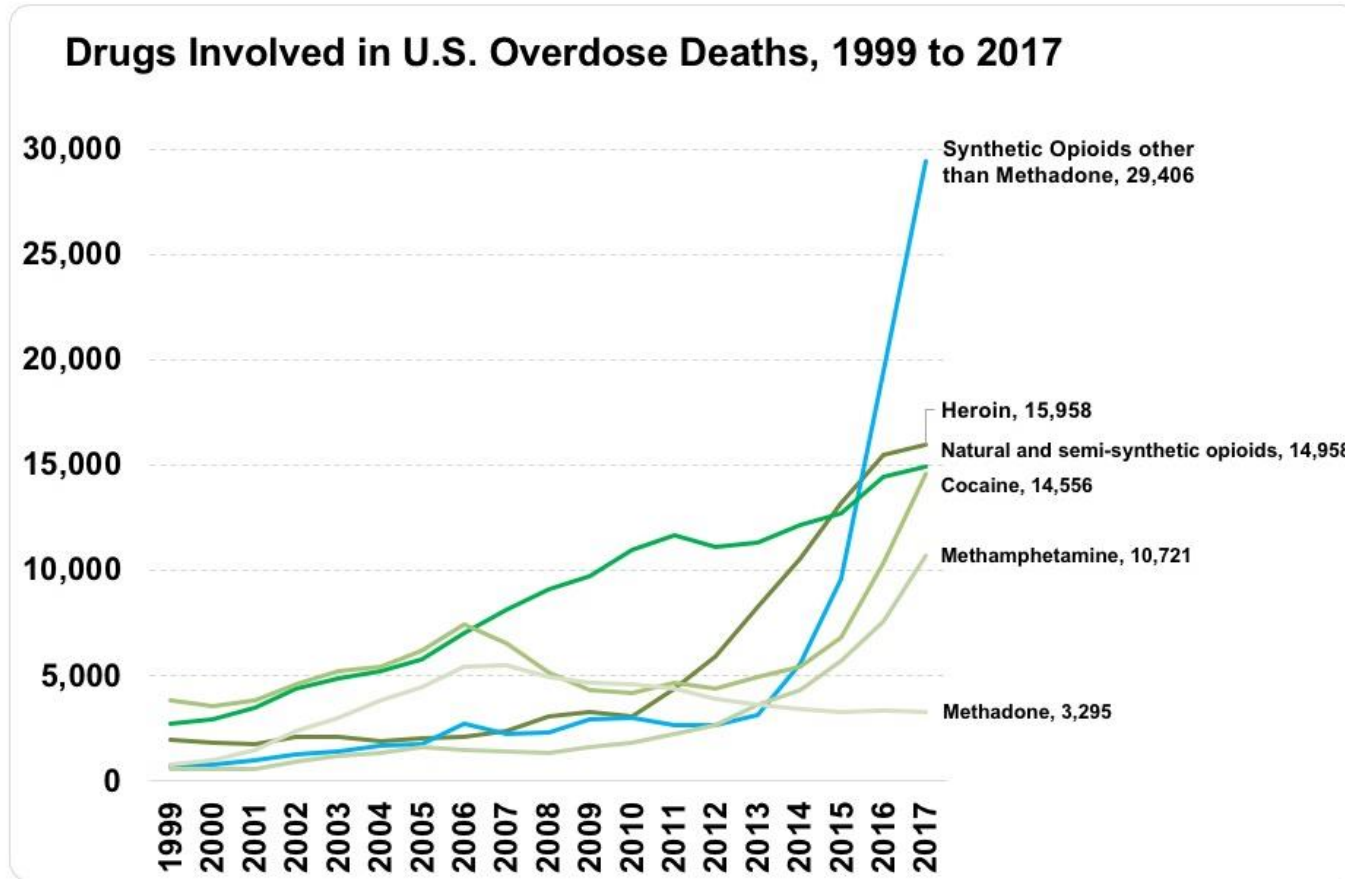
**130+** deaths  
per day in the  
United States



# 2017

<div>January</div> <table><tr><td>S</td><td>M</td><td>T</td><td>W</td><td>Th</td><td>F</td><td>S</td></tr><tr><td>1</td><td>2</td><td>3</td><td>4</td><td>5</td><td>6</td><td>7</td></tr><tr><td>8</td><td>9</td><td>10</td><td>11</td><td>12</td><td>13</td><td>14</td></tr><tr><td>15</td><td>16</td><td>17</td><td>18</td><td>19</td><td>20</td><td>21</td></tr><tr><td>22</td><td>23</td><td>24</td><td>25</td><td>26</td><td>27</td><td>28</td></tr><tr><td>29</td><td>30</td><td>31</td><td></td><td></td><td></td><td></td></tr></table>	S	M	T	W	Th	F	S	1	2	3	4	5	6	7	8	9	10	11	12	13	14	15	16	17	18	19	20	21	22	23	24	25	26	27	28	29	30	31					<div>February</div> <table><tr><td>S</td><td>T</td><td>W</td><td>Th</td><td>F</td><td>S</td></tr><tr><td></td><td>1</td><td>2</td><td>3</td><td>4</td><td></td></tr><tr><td>5</td><td>6</td><td>7</td><td>8</td><td>9</td><td>10</td></tr><tr><td>11</td><td>12</td><td>13</td><td>14</td><td>15</td><td>16</td></tr><tr><td>17</td><td>18</td><td>19</td><td>20</td><td>21</td><td>22</td></tr><tr><td>23</td><td>24</td><td>25</td><td>26</td><td>27</td><td>28</td></tr></table>	S	T	W	Th	F	S		1	2	3	4		5	6	7	8	9	10	11	12	13	14	15	16	17	18	19	20	21	22	23	24	25	26	27	28	<div>March</div> <table><tr><td>S</td><td>M</td><td>T</td><td>W</td><td>Th</td><td>F</td><td>S</td></tr><tr><td></td><td></td><td></td><td>1</td><td>2</td><td>3</td><td>4</td></tr><tr><td>5</td><td>6</td><td>7</td><td>8</td><td>9</td><td>10</td><td>11</td></tr><tr><td>12</td><td>13</td><td>14</td><td>15</td><td>16</td><td>17</td><td>18</td></tr><tr><td>19</td><td>20</td><td>21</td><td>22</td><td>23</td><td>24</td><td>25</td></tr><tr><td>26</td><td>27</td><td>28</td><td>29</td><td>30</td><td>31</td><td></td></tr></table>	S	M	T	W	Th	F	S				1	2	3	4	5	6	7	8	9	10	11	12	13	14	15	16	17	18	19	20	21	22	23	24	25	26	27	28	29	30	31		<div>April</div> <table><tr><td>S</td><td>M</td><td>T</td><td>W</td><td>Th</td><td>F</td><td>S</td></tr><tr><td></td><td></td><td></td><td></td><td></td><td></td><td>1</td></tr><tr><td>2</td><td>3</td><td>4</td><td>5</td><td>6</td><td>7</td><td>8</td></tr><tr><td>9</td><td>10</td><td>11</td><td>12</td><td>13</td><td>14</td><td>15</td></tr><tr><td>16</td><td>17</td><td>18</td><td>19</td><td>20</td><td>21</td><td>22</td></tr><tr><td>23</td><td>24</td><td>25</td><td>26</td><td>27</td><td>28</td><td>29</td></tr><tr><td>30</td><td></td><td></td><td></td><td></td><td></td><td></td></tr></table>	S	M	T	W	Th	F	S							1	2	3	4	5	6	7	8	9	10	11	12	13	14	15	16	17	18	19	20	21	22	23	24	25	26	27	28	29	30						
S	M	T	W	Th	F	S																																																																																																																																																																						
1	2	3	4	5	6	7																																																																																																																																																																						
8	9	10	11	12	13	14																																																																																																																																																																						
15	16	17	18	19	20	21																																																																																																																																																																						
22	23	24	25	26	27	28																																																																																																																																																																						
29	30	31																																																																																																																																																																										
S	T	W	Th	F	S																																																																																																																																																																							
	1	2	3	4																																																																																																																																																																								
5	6	7	8	9	10																																																																																																																																																																							
11	12	13	14	15	16																																																																																																																																																																							
17	18	19	20	21	22																																																																																																																																																																							
23	24	25	26	27	28																																																																																																																																																																							
S	M	T	W	Th	F	S																																																																																																																																																																						
			1	2	3	4																																																																																																																																																																						
5	6	7	8	9	10	11																																																																																																																																																																						
12	13	14	15	16	17	18																																																																																																																																																																						
19	20	21	22	23	24	25																																																																																																																																																																						
26	27	28	29	30	31																																																																																																																																																																							
S	M	T	W	Th	F	S																																																																																																																																																																						
						1																																																																																																																																																																						
2	3	4	5	6	7	8																																																																																																																																																																						
9	10	11	12	13	14	15																																																																																																																																																																						
16	17	18	19	20	21	22																																																																																																																																																																						
23	24	25	26	27	28	29																																																																																																																																																																						
30																																																																																																																																																																												
<div>May</div> <table><tr><td>S</td><td>M</td><td>T</td><td>W</td><td>Th</td><td>F</td><td>S</td></tr><tr><td></td><td>1</td><td>2</td><td>3</td><td>4</td><td>5</td><td>6</td></tr><tr><td>7</td><td>8</td><td>9</td><td>10</td><td>11</td><td>12</td><td>13</td></tr><tr><td>14</td><td>15</td><td>16</td><td>17</td><td>18</td><td>19</td><td>20</td></tr><tr><td>21</td><td>22</td><td>23</td><td>24</td><td>25</td><td>26</td><td>27</td></tr><tr><td>28</td><td>29</td><td>30</td><td>31</td><td></td><td></td><td></td></tr></table>	S	M	T	W	Th	F	S		1	2	3	4	5	6	7	8	9	10	11	12	13	14	15	16	17	18	19	20	21	22	23	24	25	26	27	28	29	30	31				<div>June</div> <table><tr><td>S</td><td>M</td><td>T</td><td>W</td><td>Th</td><td>F</td><td>S</td></tr><tr><td></td><td></td><td></td><td></td><td>1</td><td>2</td><td>3</td></tr><tr><td>4</td><td>5</td><td>6</td><td>7</td><td>8</td><td>9</td><td>10</td></tr><tr><td>11</td><td>12</td><td>13</td><td>14</td><td>15</td><td>16</td><td>17</td></tr><tr><td>18</td><td>19</td><td>20</td><td>21</td><td>22</td><td>23</td><td>24</td></tr><tr><td>25</td><td>26</td><td>27</td><td>28</td><td>29</td><td>30</td><td></td></tr></table>	S	M	T	W	Th	F	S					1	2	3	4	5	6	7	8	9	10	11	12	13	14	15	16	17	18	19	20	21	22	23	24	25	26	27	28	29	30		<div>July</div> <table><tr><td>S</td><td>M</td><td>T</td><td>W</td><td>Th</td><td>F</td><td>S</td></tr><tr><td></td><td>1</td><td>2</td><td>3</td><td>4</td><td>5</td><td>6</td></tr><tr><td>7</td><td>8</td><td>9</td><td>10</td><td>11</td><td>12</td><td>13</td></tr><tr><td>14</td><td>15</td><td>16</td><td>17</td><td>18</td><td>19</td><td>20</td></tr><tr><td>21</td><td>22</td><td>23</td><td>24</td><td>25</td><td>26</td><td>27</td></tr><tr><td>28</td><td>29</td><td>30</td><td>31</td><td></td><td></td><td></td></tr></table>	S	M	T	W	Th	F	S		1	2	3	4	5	6	7	8	9	10	11	12	13	14	15	16	17	18	19	20	21	22	23	24	25	26	27	28	29	30	31				<div>August</div> <table><tr><td>S</td><td>T</td><td>W</td><td>Th</td><td>F</td><td>S</td></tr><tr><td>1</td><td>2</td><td>3</td><td>4</td><td>5</td><td></td></tr><tr><td>6</td><td>7</td><td>8</td><td>9</td><td>10</td><td>11</td></tr><tr><td>12</td><td>13</td><td>14</td><td>15</td><td>16</td><td>17</td></tr><tr><td>18</td><td>19</td><td>20</td><td>21</td><td>22</td><td>23</td></tr><tr><td>24</td><td>25</td><td>26</td><td>27</td><td>28</td><td>29</td></tr><tr><td>30</td><td>31</td><td></td><td></td><td></td><td></td></tr></table>	S	T	W	Th	F	S	1	2	3	4	5		6	7	8	9	10	11	12	13	14	15	16	17	18	19	20	21	22	23	24	25	26	27	28	29	30	31					
S	M	T	W	Th	F	S																																																																																																																																																																						
	1	2	3	4	5	6																																																																																																																																																																						
7	8	9	10	11	12	13																																																																																																																																																																						
14	15	16	17	18	19	20																																																																																																																																																																						
21	22	23	24	25	26	27																																																																																																																																																																						
28	29	30	31																																																																																																																																																																									
S	M	T	W	Th	F	S																																																																																																																																																																						
				1	2	3																																																																																																																																																																						
4	5	6	7	8	9	10																																																																																																																																																																						
11	12	13	14	15	16	17																																																																																																																																																																						
18	19	20	21	22	23	24																																																																																																																																																																						
25	26	27	28	29	30																																																																																																																																																																							
S	M	T	W	Th	F	S																																																																																																																																																																						
	1	2	3	4	5	6																																																																																																																																																																						
7	8	9	10	11	12	13																																																																																																																																																																						
14	15	16	17	18	19	20																																																																																																																																																																						
21	22	23	24	25	26	27																																																																																																																																																																						
28	29	30	31																																																																																																																																																																									
S	T	W	Th	F	S																																																																																																																																																																							
1	2	3	4	5																																																																																																																																																																								
6	7	8	9	10	11																																																																																																																																																																							
12	13	14	15	16	17																																																																																																																																																																							
18	19	20	21	22	23																																																																																																																																																																							
24	25	26	27	28	29																																																																																																																																																																							
30	31																																																																																																																																																																											
<div>September</div> <table><tr><td>S</td><td>M</td><td>T</td><td>W</td><td>Th</td><td>F</td><td>S</td></tr><tr><td></td><td></td><td></td><td></td><td></td><td>1</td><td>2</td></tr><tr><td>3</td><td>4</td><td>5</td><td>6</td><td>7</td><td>8</td><td>9</td></tr><tr><td>10</td><td>11</td><td>12</td><td>13</td><td>14</td><td>15</td><td>16</td></tr><tr><td>17</td><td>18</td><td>19</td><td>20</td><td>21</td><td>22</td><td>23</td></tr><tr><td>24</td><td>25</td><td>26</td><td>27</td><td>28</td><td>29</td><td>30</td></tr></table>	S	M	T	W	Th	F	S						1	2	3	4	5	6	7	8	9	10	11	12	13	14	15	16	17	18	19	20	21	22	23	24	25	26	27	28	29	30	<div>October</div> <table><tr><td>S</td><td>T</td><td>W</td><td>Th</td><td>F</td><td>S</td></tr><tr><td>1</td><td>2</td><td>3</td><td>4</td><td>5</td><td>6</td></tr><tr><td>7</td><td>8</td><td>9</td><td>10</td><td>11</td><td>12</td></tr><tr><td>13</td><td>14</td><td>15</td><td>16</td><td>17</td><td>18</td></tr><tr><td>19</td><td>20</td><td>21</td><td>22</td><td>23</td><td>24</td></tr><tr><td>25</td><td>26</td><td>27</td><td>28</td><td>29</td><td>30</td></tr><tr><td>31</td><td></td><td></td><td></td><td></td><td></td></tr></table>	S	T	W	Th	F	S	1	2	3	4	5	6	7	8	9	10	11	12	13	14	15	16	17	18	19	20	21	22	23	24	25	26	27	28	29	30	31						<div>November</div> <table><tr><td>S</td><td>M</td><td>T</td><td>W</td><td>Th</td><td>F</td><td>S</td></tr><tr><td></td><td></td><td></td><td>1</td><td>2</td><td>3</td><td>4</td></tr><tr><td>5</td><td>6</td><td>7</td><td>8</td><td>9</td><td>10</td><td>11</td></tr><tr><td>12</td><td>13</td><td>14</td><td>15</td><td>16</td><td>17</td><td>18</td></tr><tr><td>19</td><td>20</td><td>21</td><td>22</td><td>23</td><td>24</td><td>25</td></tr><tr><td>26</td><td>27</td><td>28</td><td>29</td><td>30</td><td></td><td></td></tr></table>	S	M	T	W	Th	F	S				1	2	3	4	5	6	7	8	9	10	11	12	13	14	15	16	17	18	19	20	21	22	23	24	25	26	27	28	29	30			<div>December</div> <table><tr><td>S</td><td>T</td><td>W</td><td>Th</td><td>F</td><td>S</td></tr><tr><td>1</td><td>2</td><td>3</td><td>4</td><td>5</td><td>6</td></tr><tr><td>7</td><td>8</td><td>9</td><td>10</td><td>11</td><td>12</td></tr><tr><td>13</td><td>14</td><td>15</td><td>16</td><td>17</td><td>18</td></tr><tr><td>19</td><td>20</td><td>21</td><td>22</td><td>23</td><td>24</td></tr><tr><td>25</td><td>26</td><td>27</td><td>28</td><td>29</td><td>30</td></tr><tr><td>31</td><td></td><td></td><td></td><td></td><td></td></tr></table>	S	T	W	Th	F	S	1	2	3	4	5	6	7	8	9	10	11	12	13	14	15	16	17	18	19	20	21	22	23	24	25	26	27	28	29	30	31						
S	M	T	W	Th	F	S																																																																																																																																																																						
					1	2																																																																																																																																																																						
3	4	5	6	7	8	9																																																																																																																																																																						
10	11	12	13	14	15	16																																																																																																																																																																						
17	18	19	20	21	22	23																																																																																																																																																																						
24	25	26	27	28	29	30																																																																																																																																																																						
S	T	W	Th	F	S																																																																																																																																																																							
1	2	3	4	5	6																																																																																																																																																																							
7	8	9	10	11	12																																																																																																																																																																							
13	14	15	16	17	18																																																																																																																																																																							
19	20	21	22	23	24																																																																																																																																																																							
25	26	27	28	29	30																																																																																																																																																																							
31																																																																																																																																																																												
S	M	T	W	Th	F	S																																																																																																																																																																						
			1	2	3	4																																																																																																																																																																						
5	6	7	8	9	10	11																																																																																																																																																																						
12	13	14	15	16	17	18																																																																																																																																																																						
19	20	21	22	23	24	25																																																																																																																																																																						
26	27	28	29	30																																																																																																																																																																								
S	T	W	Th	F	S																																																																																																																																																																							
1	2	3	4	5	6																																																																																																																																																																							
7	8	9	10	11	12																																																																																																																																																																							
13	14	15	16	17	18																																																																																																																																																																							
19	20	21	22	23	24																																																																																																																																																																							
25	26	27	28	29	30																																																																																																																																																																							
31																																																																																																																																																																												

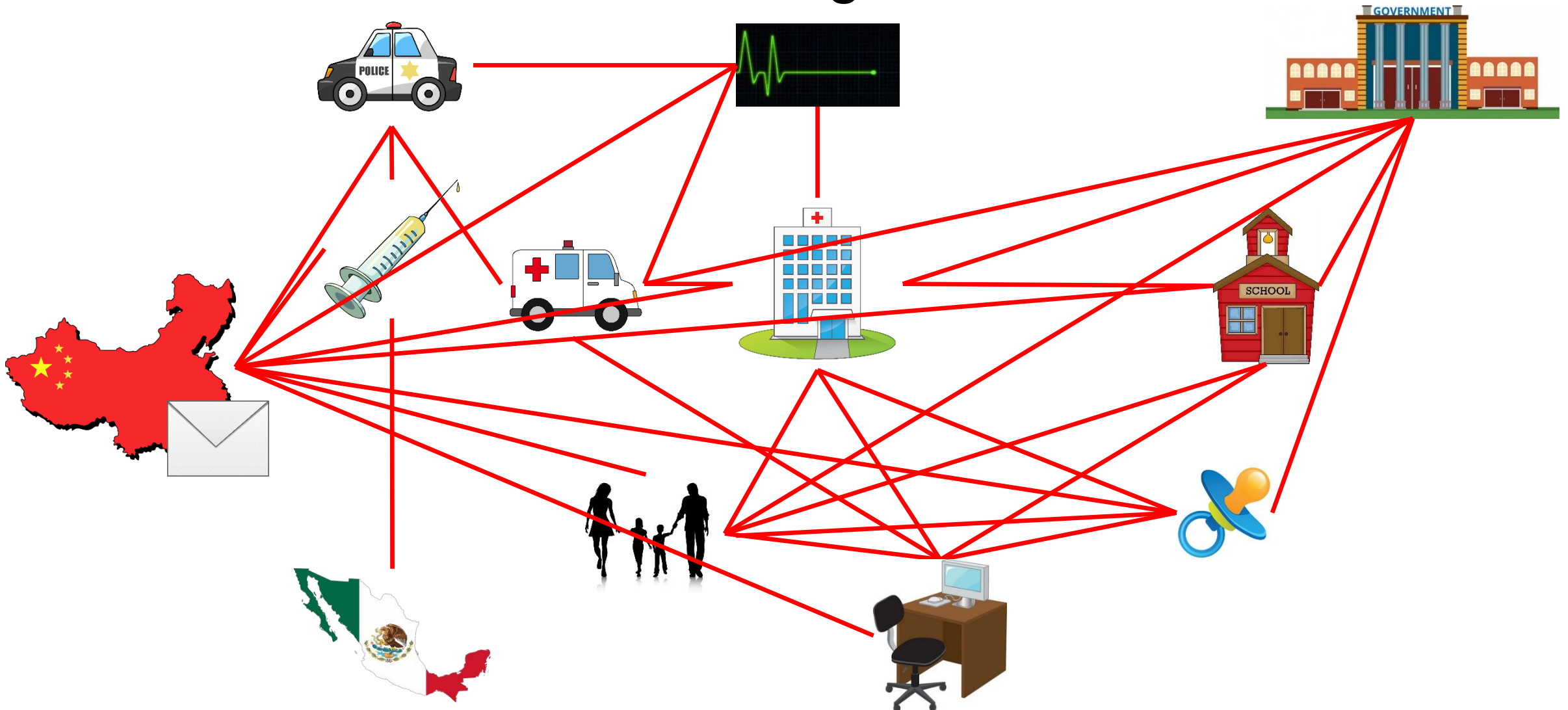
# Drug- and Alcohol-Related Intoxication Deaths, U.S. and Maryland



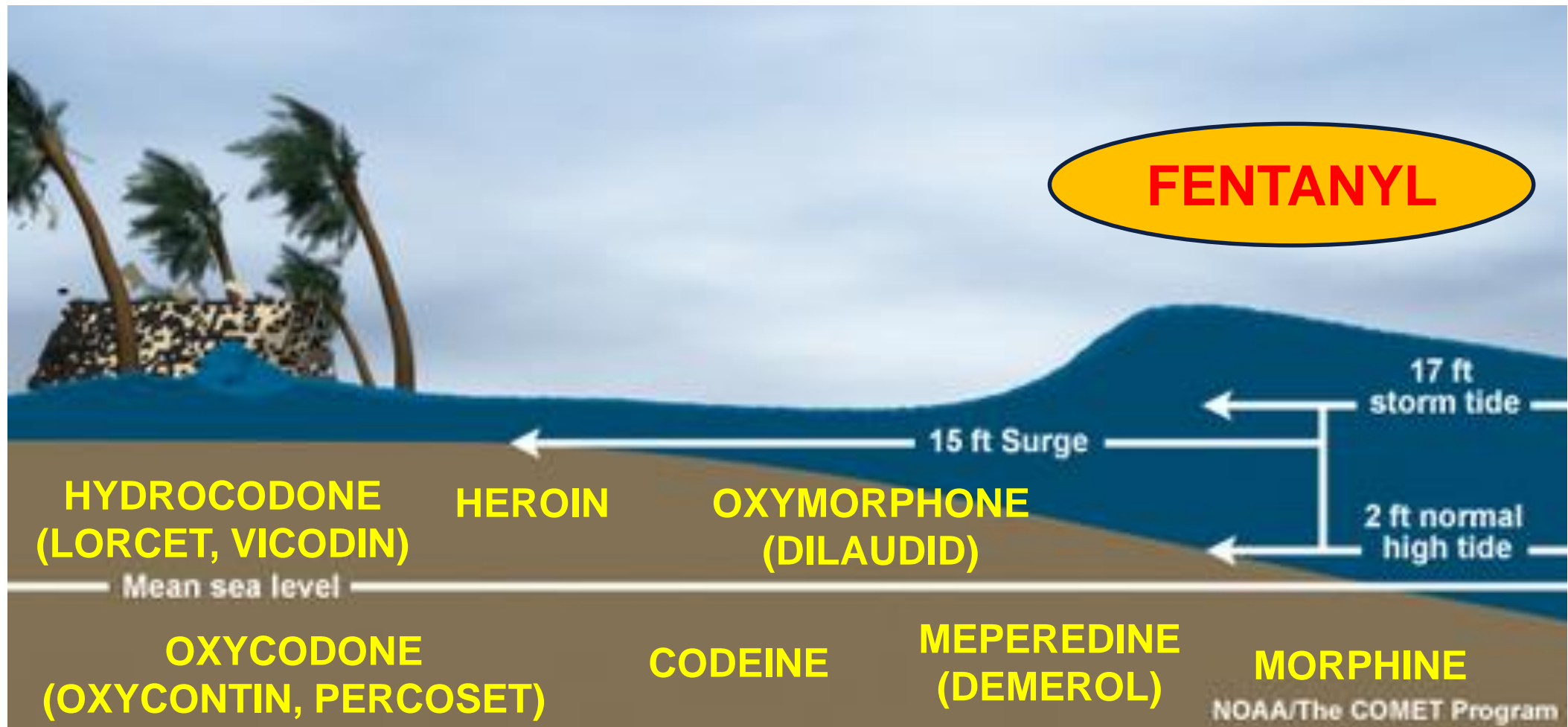
NIDA - <https://www.drugabuse.gov/related-topics/trends-statistics/overdose-death-rates>

Maryland Dept. of Health - [https://bha.health.maryland.gov/OVERDOSE\\_PREVENTION/Documents/Drug\\_Intox\\_Report\\_2017.pdf](https://bha.health.maryland.gov/OVERDOSE_PREVENTION/Documents/Drug_Intox_Report_2017.pdf)

# Cascading Effects



# What is Causing this increase?



# Non-Pharmaceutical Fentanyl

## Fatal Dose

*(varies widely by user and the method of consumption)*

**Heroin**

30 mg

**Fentanyl**

2-3mg

**Carfentanil**

200 micrograms

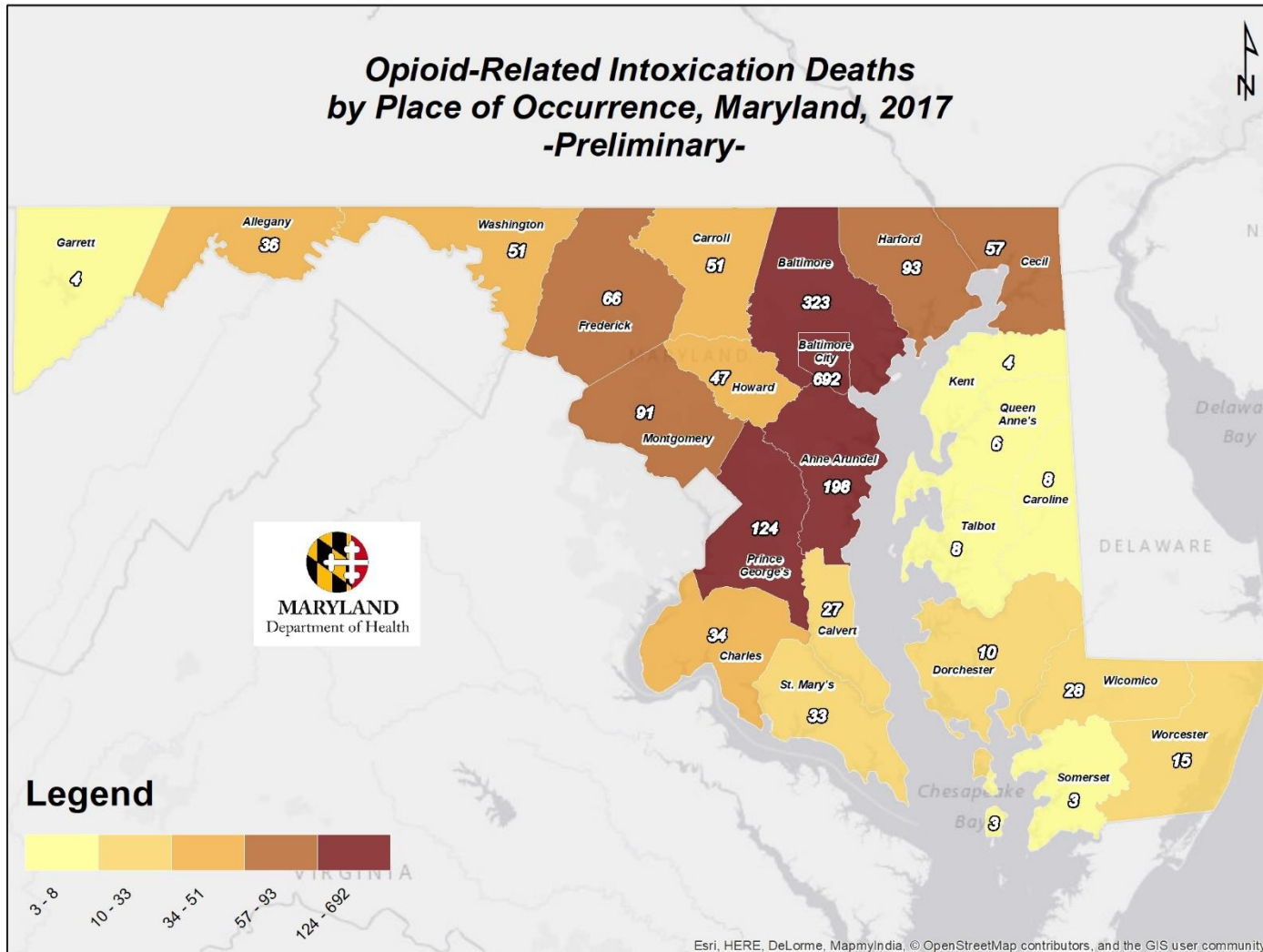


*2mg of powder shown next to a penny (DEA)*





# Maryland Fatality Trends



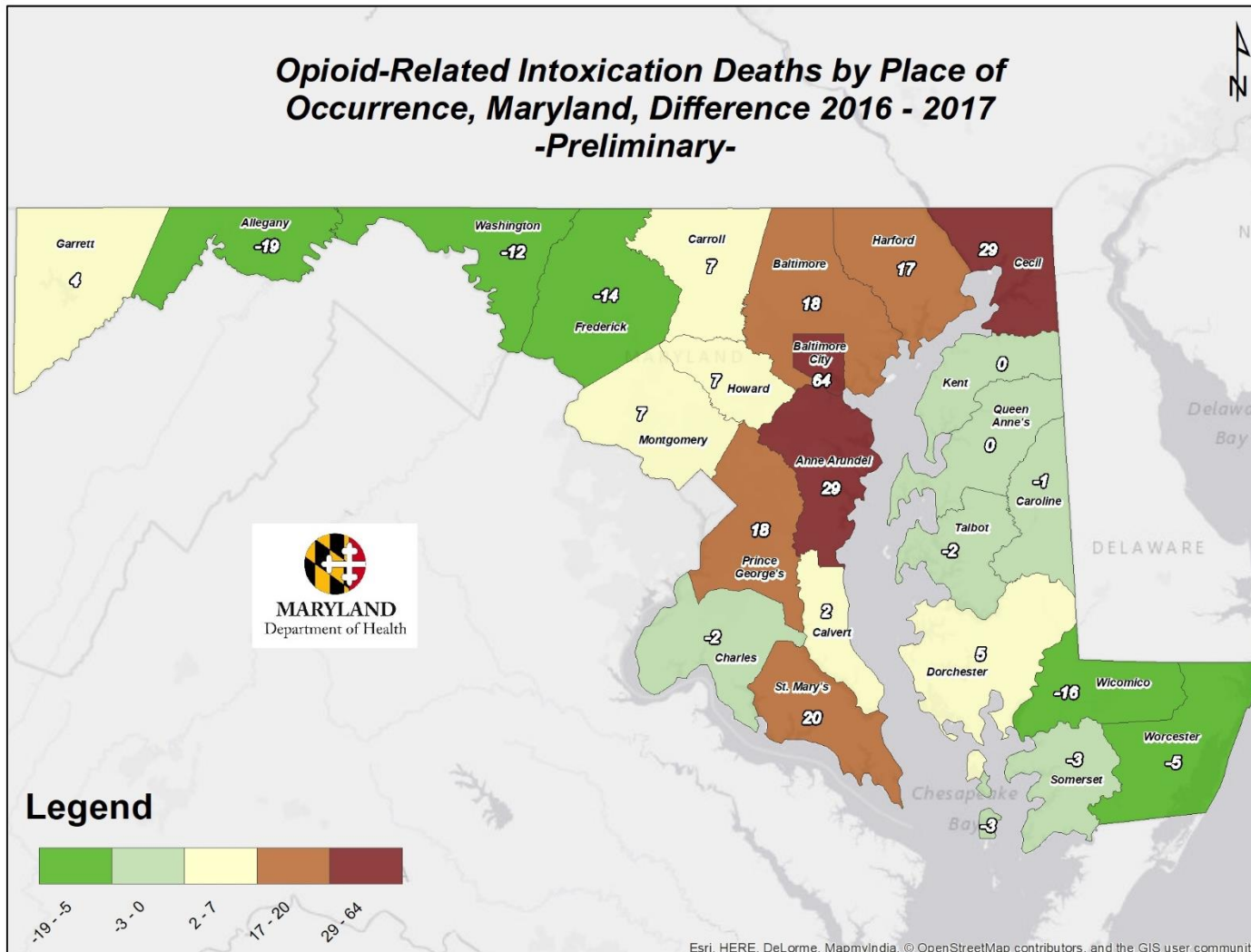
In 2017

- **2,282 total** drug and alcohol-related intoxication deaths
- **2,009 of the 2,282 (88%)** were opioid-related (including heroin, prescription opioids, and fentanyl)

For more information, see Maryland Department of Health's *Unintentional Drug- and Alcohol-Related Intoxication Deaths in Maryland Annual Report 2017*.



# Maryland Fatality Trends



Fatality trends from 2016 to 2017

- **9% increase** of total drug and alcohol-related
- **42% increase** of fentanyl-related
- **49% increase** of cocaine-related
- **11% decrease** of heroin-related
- **1% decrease** of prescription-related

For more information, see Maryland Department of Health's *Unintentional Drug- and Alcohol-Related Intoxication Deaths in Maryland Annual Report 2017*.

# Maryland's Declaration of Emergency



EXECUTIVE ORDER  
01.01.2017.02

Executive Order Regarding the Heroin, Opioid, and Fentanyl Overdose Crisis  
Declaration of Emergency

WHEREAS, The State of Maryland is subject to an emergency as defined in Section 14-101(c) of the Public Safety Article of the Code of Maryland;

WHEREAS, Heroin and opioid abuse is an illness that threatens the well-being, productivity, livelihood, and relationships of Marylanders;

WHEREAS, Heroin and opioid use has tripled nationwide in the last 12 months, with approximately 27 million users across the country;



# Opioid Operational Command Center

The Opioid Operational Command Center facilitates collaboration among state and local partners to reduce the harmful impacts of heroin and opioid use on Maryland communities.

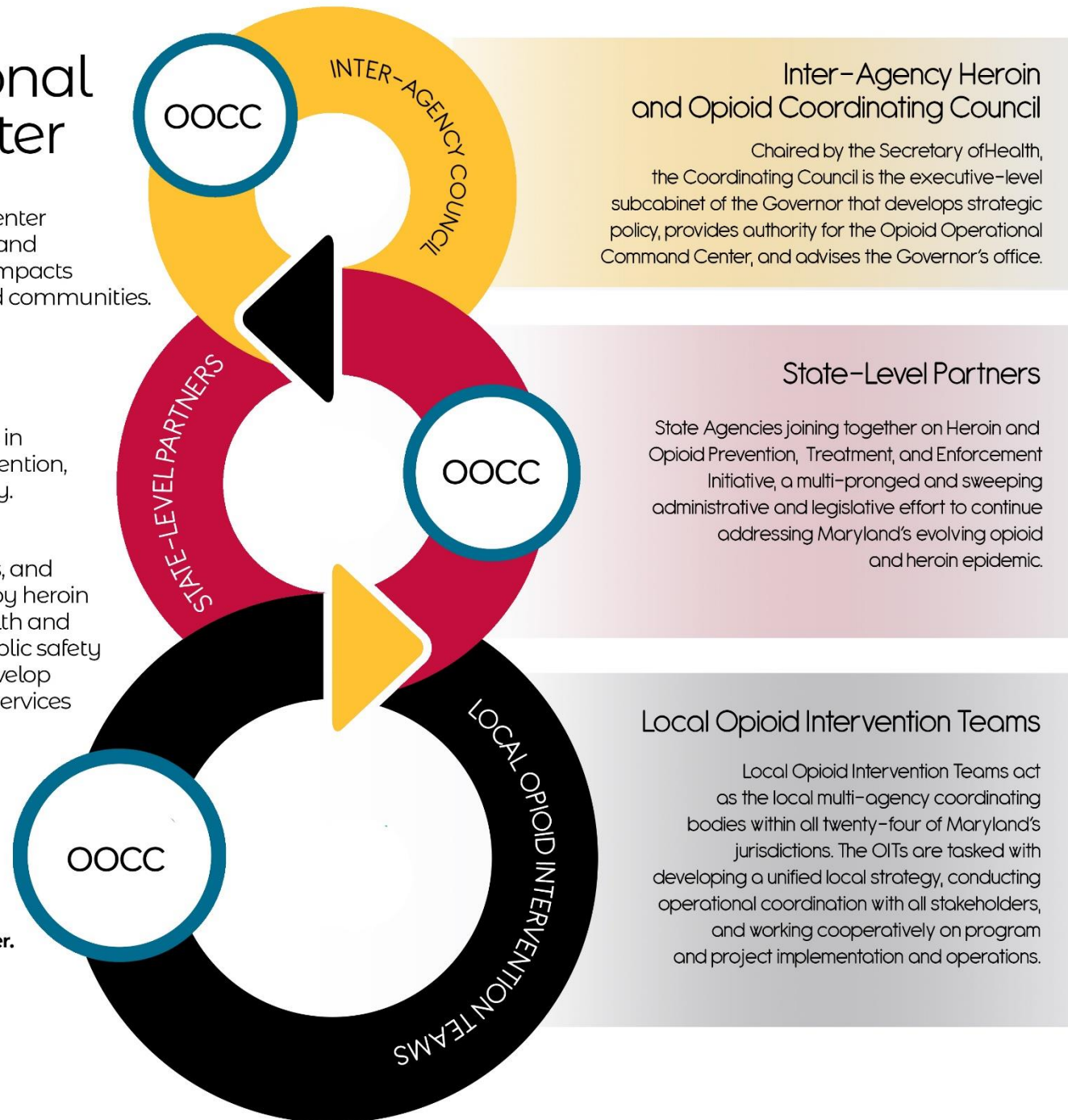
## What does it do?

Combat the heroin and opioid crisis in Maryland through education, prevention, treatment, interdiction, and recovery.

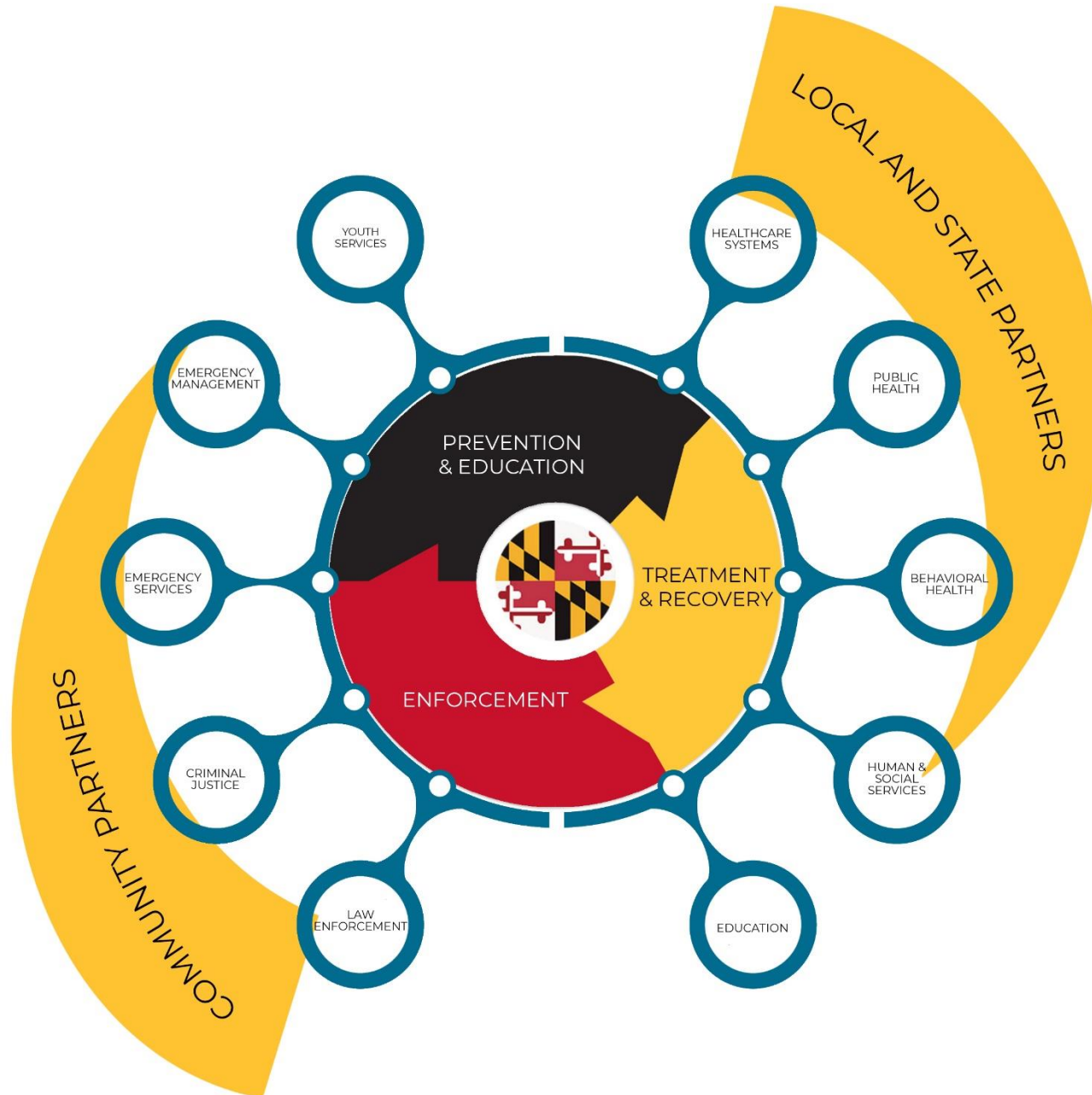
## Why?

Residents of all ages, races, genders, and areas across the state are affected by heroin and opioid use. State and local health and human services, education, and public safety officials are working together to develop community-based programs and services to combat this public health crisis.

**By working together with the Opioid Operational Command Center, partners share data, information, and ideas. Together, we can reduce the harmful impacts of heroin and opioid use and continue Changing Maryland for the Better.**







1

Prevent new cases

2

Improve early identification and intervention

3

Expand access to treatment and recovery services

4

Enhance data collection, sharing, and analysis

# Local Opioid Intervention Team Response

The screenshot shows the homepage of the 'Before it's too late.' website. At the top, there is a navigation bar with links to Maryland.gov, Phone Directory, State Agencies, Online Services, and a Translate button. Below this, the main header features the text 'PREVENTION • TREATMENT • RECOVERY' and three icons: a speech bubble, a red cross, and a hand holding a heart. A large red button with the text 'Before it's too late.' is prominently displayed. To the right of the header is a search bar and a yellow banner that reads 'MPT Presents Fighting Opioids Today: Maryland Communities on October 11'. Below the header is a black navigation bar with white text links: HOME, ABOUT, EVENTS, RESOURCES, NEWS, OCCC AGENCIES, PARTNERS, and DATA. The main content area is divided into two columns. The left column is titled 'Resources' and contains a list of links: Naloxone, Crisis Hotline, Opioid Intervention Teams, Find Treatment (Search), Find Your Local Health Department, MDestinationRecovery.org, and Good Samaritan Law. The right column is titled 'Opioid Intervention Teams' and contains a paragraph explaining that OITs are set up in each of Maryland's 24 jurisdictions and led by the emergency manager and health officer. Below this paragraph is a list of links to each jurisdiction's website, including response plans and contact information for Allegany County, Anne Arundel County, Baltimore City, Baltimore County, Calvert County, Caroline County, Carroll County, Cecil County, Charles County, and Dorchester County.

Resources

- > Naloxone
- > Crisis Hotline
- > Opioid Intervention Teams
- > Find Treatment (Search)
- > Find Your Local Health Department
- > MDestinationRecovery.org
- > Good Samaritan Law

Opioid Intervention Teams

Opioid Intervention Teams (OITs) are set up in each of Maryland's 24 jurisdictions and led by the emergency manager and health officer. They are multi-agency coordination bodies that coordinate with the community, and complement and integrate with the statewide opioid response effort.

Below, you'll find links to each jurisdiction's website with more information on the opioid epidemic, response plan, and a contact for more information.

**Allegany County** — response plan, contact: [allegany.opioidteam@maryland.gov](mailto:allegany.opioidteam@maryland.gov)

**Anne Arundel County** — contact: [Opioids@aacounty.org](mailto:Opioids@aacounty.org)

**Baltimore City** — response plan, contact: [BaltimoreCityOIT@baltimorecity.gov](mailto:BaltimoreCityOIT@baltimorecity.gov)

**Baltimore County** — response plan, contact: [behavioralhealth@baltimorecountymd.gov](mailto:behavioralhealth@baltimorecountymd.gov)

**Calvert County** — response plan, contact: [OIT@calvertcountymd.gov](mailto:OIT@calvertcountymd.gov)

**Caroline County** — response plan, contact: [info@drugfreecaroline.org](mailto:info@drugfreecaroline.org)

**Carroll County** — response plan 1, response plan 2, contact: [carroll.oit@maryland.gov](mailto:carroll.oit@maryland.gov)

**Cecil County** — response plan, contact: [info@cecilcountyhealth.org](mailto:info@cecilcountyhealth.org)

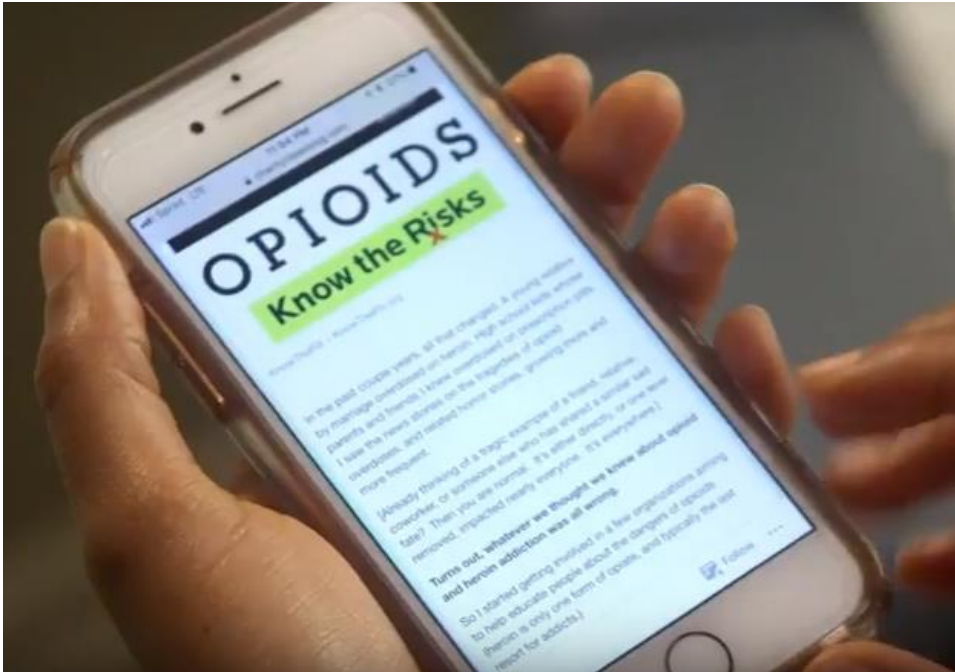
**Charles County** — response plan, contact: [MDH.oitteamcharlescounty@maryland.gov](mailto:MDH.oitteamcharlescounty@maryland.gov)

**Dorchester County** — response plan, contact: [dorchester.oit@maryland.gov](mailto:dorchester.oit@maryland.gov)

- Local Opioid Resource Website
- Community Response Plan
- OIT Leadership Contact Information

<http://beforeitstoolate.maryland.gov/opioid-intervention-teams>

# Understanding How You Can Make a Difference

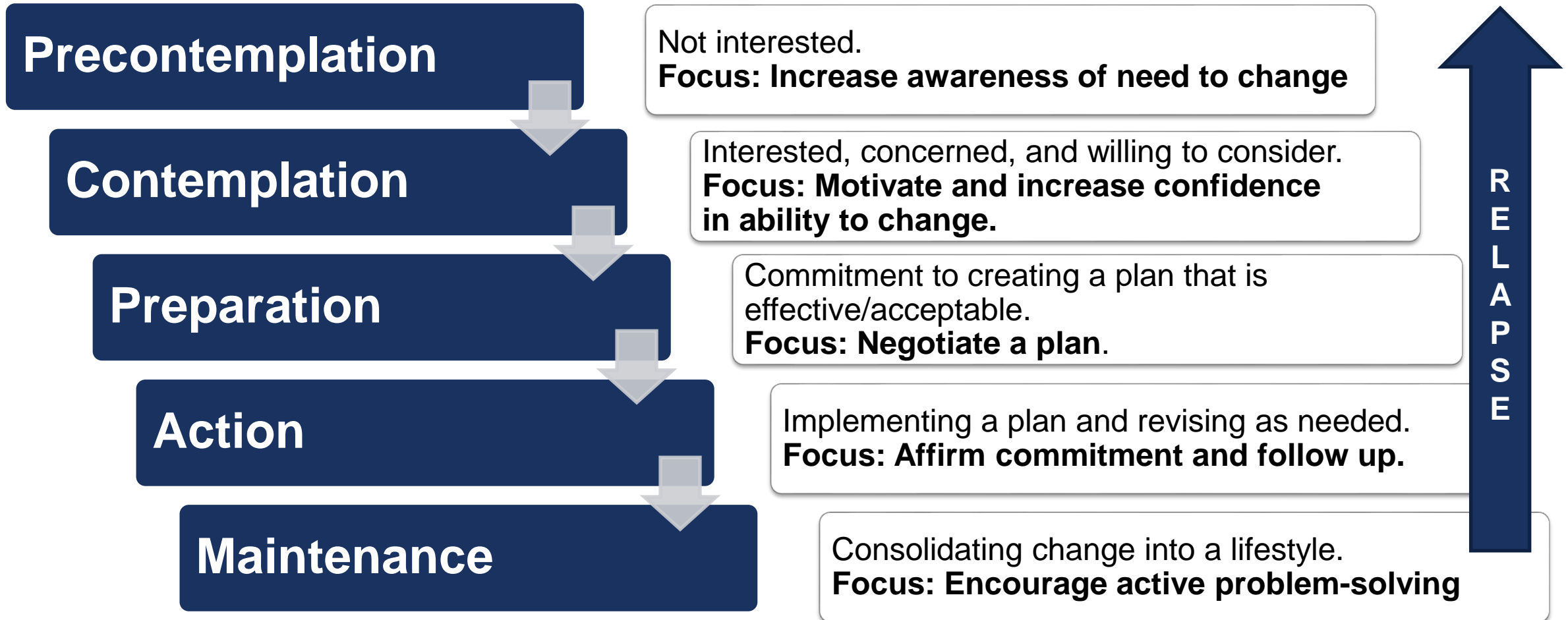


- Addiction and Behavior Change
- Risk and Protective Factors
- Personal Steps to be a part of the solution

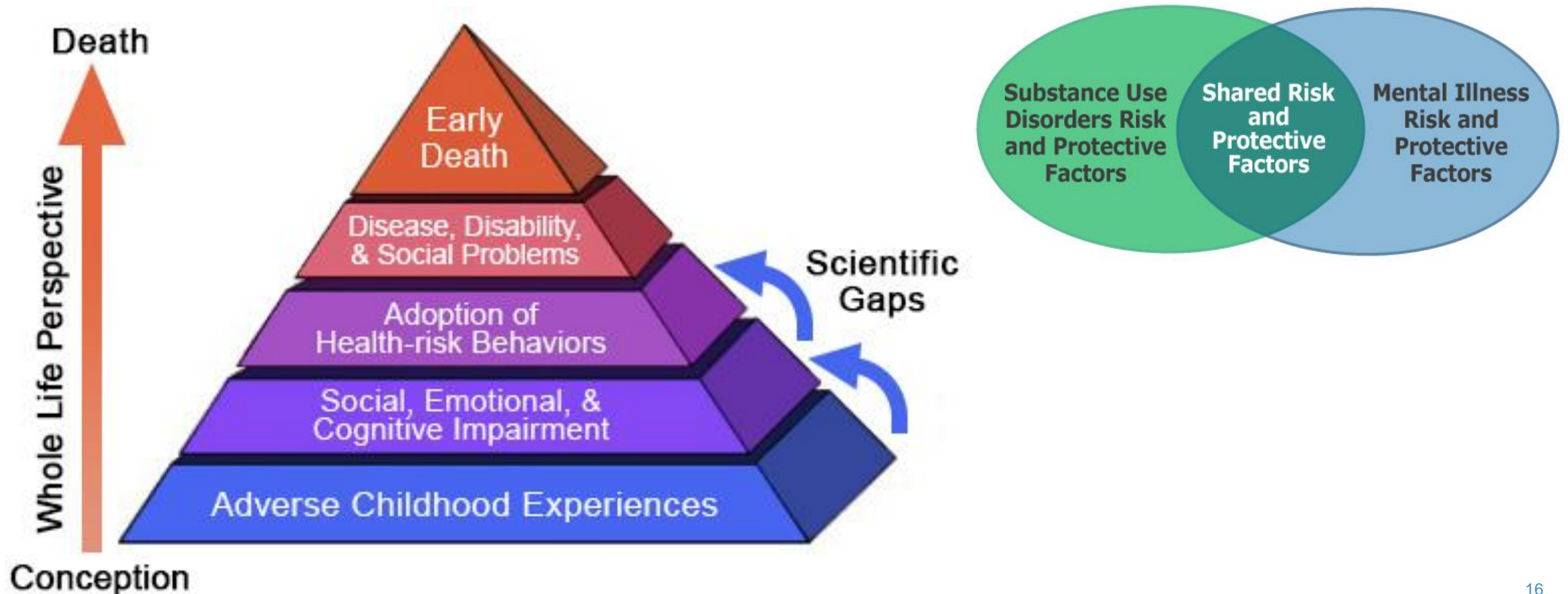


## Stages of Change

## Tasks at Each Stage:



# Adverse Childhood Experiences (ACEs)



# Be a Part of the Solution

- ❖ **Elevate the conversation**

Avoid compassion fatigue, make sure this crisis continues to get the attention it needs

- ❖ **Become naloxone (Narcan) trained**

Contact your local Health Department for information

- ❖ **Be an informed patient**

Talk to your doctor about all pain medications, and understand the risks involved

- ❖ **Talk to your family, friends, and coworkers**

Ensure that everyone you care about understands the risks of opioid use and the resources available if they need help



**Web:** [BeforeItsTooLateMD.org](http://BeforeItsTooLateMD.org)

**Local Resources:** <http://beforeitstoolate.maryland.gov/opioid-intervention-teams>

**Facebook:** [facebook.com/BeforeItsTooLateMD](https://facebook.com/BeforeItsTooLateMD)

**Twitter:** [@BeforeIts2Late](https://twitter.com/BeforeIts2Late)

Questions?

