

UMB Institute *for* Clinical & Translational Research

April 5, 2018

www.umaryland.edu/ICTR

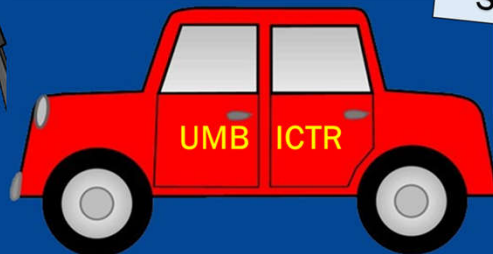
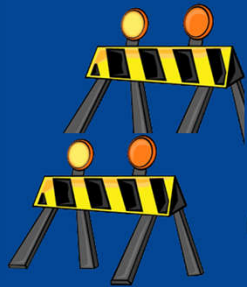
UMB ICTR (ik-ter)

1st

Universitywide,
interdisciplinary hub for
clinical translational
research and training,
bringing together the
schools of ...



Removing barriers to clinical and translational research and providing a supportive environment and high-quality resources...

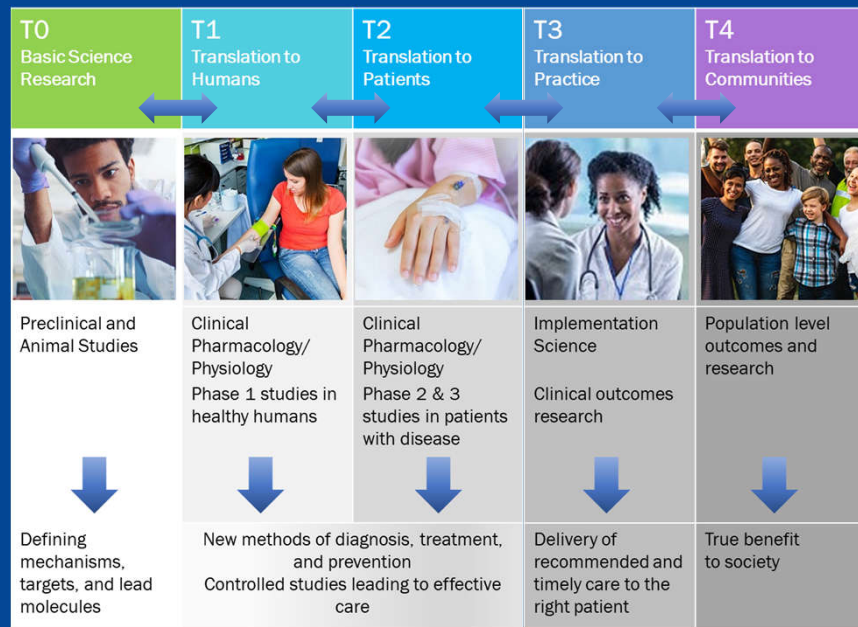


UNIVERSITY of MARYLAND
BALTIMORE

INSTITUTE FOR CLINICAL & TRANSLATIONAL RESEARCH

3

Translational Science Spectrum (T0-T4)



UNIVERSITY of MARYLAND
BALTIMORE

INSTITUTE FOR CLINICAL & TRANSLATIONAL RESEARCH

UMB ICTR is disease agnostic, supporting multiple endeavors to support health across diverse communities and the entire lifespan.

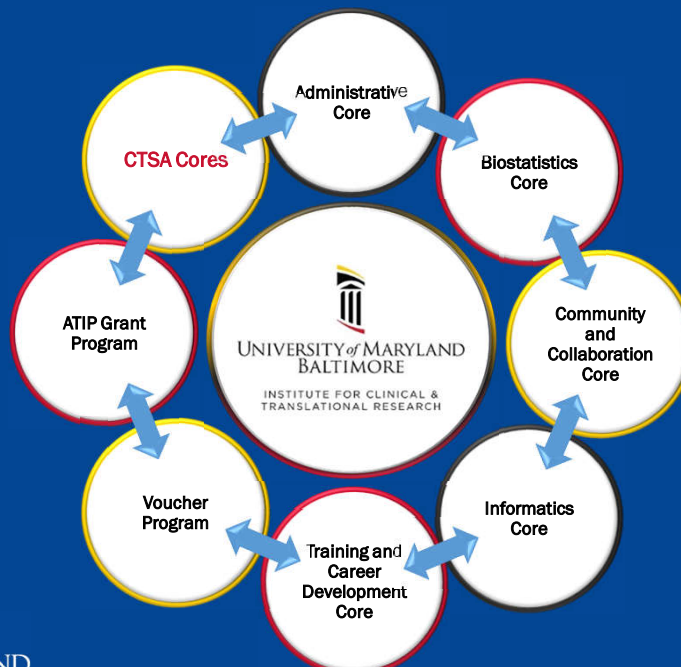


UNIVERSITY of MARYLAND
BALTIMORE

INSTITUTE FOR CLINICAL & TRANSLATIONAL RESEARCH

5

UMB ICTR Cores & Resources



UNIVERSITY of MARYLAND
BALTIMORE

INSTITUTE FOR CLINICAL & TRANSLATIONAL RESEARCH

6

ICTR Biostatistics Core Leadership



Soren Bentzen, PhD, DMSc
School of Medicine
Director, ICTR Biostatistics Core



Laurence S. Magder, PhD
School of Medicine
Associate Director, ICTR Biostatistics Core



Shijun Zhu, DrE, MS
School of Nursing
Associate Director, ICTR Biostatistics Core



Eberechukwu Onukwugha, PhD, MS
School of Pharmacy
Associate Director, ICTR Biostatistics Core



UNIVERSITY of MARYLAND
BALTIMORE

INSTITUTE FOR CLINICAL & TRANSLATIONAL RESEARCH

7

ICTR Biostatistics Core Services

- Formulation of Research Question
- Study Design Sample Size Calculation/Power Analysis
- Data Collection/Preparing Data for Analysis
- Data Analysis
- Interpretation of Results
- Reports and Publications
- Statistical Bioinformatics
- Access to Data from Outside Sources



UNIVERSITY of MARYLAND
BALTIMORE

INSTITUTE FOR CLINICAL & TRANSLATIONAL RESEARCH

8

ICTR Community & Collaboration Core



C. Daniel Mullins, PhD
School of Pharmacy
Director, ICTR Community and
Collaboration Core



Elizabeth Galik, PhD, CRNP, FAAN, FAANP
School of Nursing
Associate Director, ICTR Community and
Collaboration Core



Thomas W. Oates, DMD, PhD
School of Dentistry
Associate Director, ICTR Community and
Collaboration Core



Fernando Wagner, MPH, ScD
School of Social Work
Associate Director, ICTR Community and
Collaboration Core



UNIVERSITY of MARYLAND
BALTIMORE

INSTITUTE FOR CLINICAL & TRANSLATIONAL RESEARCH

9

ICTR Community & Collaboration Core Services

- Consultations with PATIENTS Program Outreach and Partners to develop appropriate communications strategy for recruitment materials and dissemination
- Creating focus group/interpreting results
- Developing participant instruction/recruitment videos
- Assembling advisory board
- Connecting with Citizen Scientists



UNIVERSITY of MARYLAND
BALTIMORE

INSTITUTE FOR CLINICAL & TRANSLATIONAL RESEARCH

10

Community and Collaboration Core

Foster and facilitate community engagement and collaborative effort by providing access to expert patient- and community-centered services and resources, such as:

- E.g., Creating focus groups, participant instruction videos, and assembling an advisory board



Support and Expand researcher access to the **PAT**ient-centered **I**nvolvement in **E**valuating the effective**N**ess of **T**reatment**S** (**PATIENTS**) resources and expertise



- Supported by the NIH
- National registry database of volunteers wanting to participate in research
- Over 7,000 volunteers registered within a 50-mile radius of Baltimore



UNIVERSITY of MARYLAND
BALTIMORE

INSTITUTE FOR CLINICAL & TRANSLATIONAL RESEARCH

11

ICTR Community Engagement Initiatives

Provide Research Vehicle for Community Outreach Projects and Research Studies



UNIVERSITY of MARYLAND
BALTIMORE

INSTITUTE FOR CLINICAL & TRANSLATIONAL RESEARCH

12

UMB Community Engagement Highlights



Brain Bee
School of Dentistry



PATIENTS Engaged In Research
School of Pharmacy



UMB CURE
Scholars Program



Governor's Wellmobile
School of Nursing



UMB Community
Engagement Center



Clinical Law Program
Carey School of Law



Community
Outreach
Services &
Promise
Heights
School of
Social Work



Mini-Med School
School of Medicine



UNIVERSITY of MARYLAND
BALTIMORE

INSTITUTE FOR CLINICAL & TRANSLATIONAL RESEARCH

13

ICTR Informatics Core Leadership



J. Kathleen Tracy, PhD
School of Medicine
Director, ICTR Informatics Core



Eun-Shim Nahm, PhD, RN, FAAN
School of Nursing
Associate Director, ICTR Informatics Core



Fadia T. Shaya, PhD, MPH
School of Pharmacy
Associate Director, ICTR Informatics Core



UNIVERSITY of MARYLAND
BALTIMORE

INSTITUTE FOR CLINICAL & TRANSLATIONAL RESEARCH

14

ICTR Informatics Core Services

- Research Harbor Resources
- REDCap Database/Survey Development Services
- Qualtrics Survey Services
- Access to Clinical Data and other Specialized Datasets
- Data Use Agreement (DUA) Support
- Quality Assurance/Control Services
- Pre-review of data for “fit” to proposed project and data readiness for analysis
- Expertise on informatics projects that include end-user experience and user interface



UNIVERSITY of MARYLAND
BALTIMORE

INSTITUTE FOR CLINICAL & TRANSLATIONAL RESEARCH

15

ICTR Training and Career Development Core



Rose M. Viscardi, MD
School of Medicine
Core Co-Director



Susan Dorsey, PhD, RN, FAAN
School of Nursing
Core Co-Director



Wilbur H. Chen, MD, MS
School of Medicine
Co-Director, ICTR Studios



James D. Campbell, MD, MS
School of Medicine
Co-Director, ICTR Studios



UNIVERSITY of MARYLAND
BALTIMORE

INSTITUTE FOR CLINICAL & TRANSLATIONAL RESEARCH

16

ICTR ATIP Grant Program

The Accelerated Translational Incubator Pilot (ATIP) Grant Program provides starter funds for projects specifically focused on innovative, **translational research** that involve faculty from the UMB Schools and collaborative partners

Innovative Collaboration Pilot Grant

- 4 or more awards
- 12 months of funding up to **\$50K**

Community-Engaged Research Pilot Grant

- 1 award or more
- 12 months of funding up to **\$50K**

ICTR Voucher Program*



Gloria Reeves, MD
School of Medicine
Co-Director, ICTR Voucher Program



Thomas W. Oates, DMD, PhD
School of Dentistry
Co-Director, ICTR Voucher Program

To enable generation of data on clinical and translational research projects by **defraying the costs of other UMB Core Services**

* Priority will be given to IRB-approved ATIP grants, K awards, and all funded, externally peer-reviewed, clinical and translational research

ICTR Voucher Program

Up to \$10K in Voucher Support per Applicant

General Clinical Research Center (GCRC)

- Inpatient & Outpatient Unit; Open 24 hours a day, 7 days a week!
- Provides safe space and research nursing for clinical research studies
- Specimen collection & processing, study drug administration, DEXA machine, specialized procedures, i.e. biopsies, glucose clamps
- Research Subject Advocate
- Currently supports ~70 protocols per year, 85% federally-funded protocols
- Since 2011, GCRC has supported 230 active protocols, \$139.8 M in grant awards

Center for Innovative Biomedical Resources (CIBR)

- The administrative home for the UMB biomedical core resources:
- Cytometric and Bioassay facilities, i.e. Cytokine Laboratory
- Clinical Resource Facilities, i.e. Translational Core, Cytogenetics
- Imaging Technologies, i.e. Magnetic Resonance Research Center
- Structural Biology Facilities, i.e. Mass Spectrometry, Protein Analysis

ICTR Resources, continued

Studios

- The “Studios” program brings together multi-, interdisciplinary experts to provide free, structured, project-specific feedback for researchers

Ask The Navigator

- The ICTR Research Navigator is available to help direct investigators to ICTR services and other UMB core services, as needed, and to advise them on the “next steps” in their clinical and translational research projects

Mobile Research Van

ICTR/CTSA Training Program

The overall goal of the Training and Career Development Program is to educate, train and develop future generations of clinical scientists needed to move basic research findings into novel therapies.

Training Award	# of Slots per year	Funding	Training Program Budget
TL1	5 (2 Pre-doc & 3 Post-doc)	12 months	\$315,386 for 5 trainees per year Includes Stipend, Tuition & Fees, and Other expenses: Disability and Health Insurance, Travel to attend workshops/seminars
KL2	Year 1: 1 scholar Years 2-5: 2 scholars (Junior Faculty)	2 years (3 rd year: cost-shared)	\$517,260 per scholar Includes Salary support, fringe benefits, Other expenses: Travel, Tuition & Fees, and Research Funds



UNIVERSITY of MARYLAND
BALTIMORE

INSTITUTE FOR CLINICAL & TRANSLATIONAL RESEARCH

21

2018 ICTR Resources

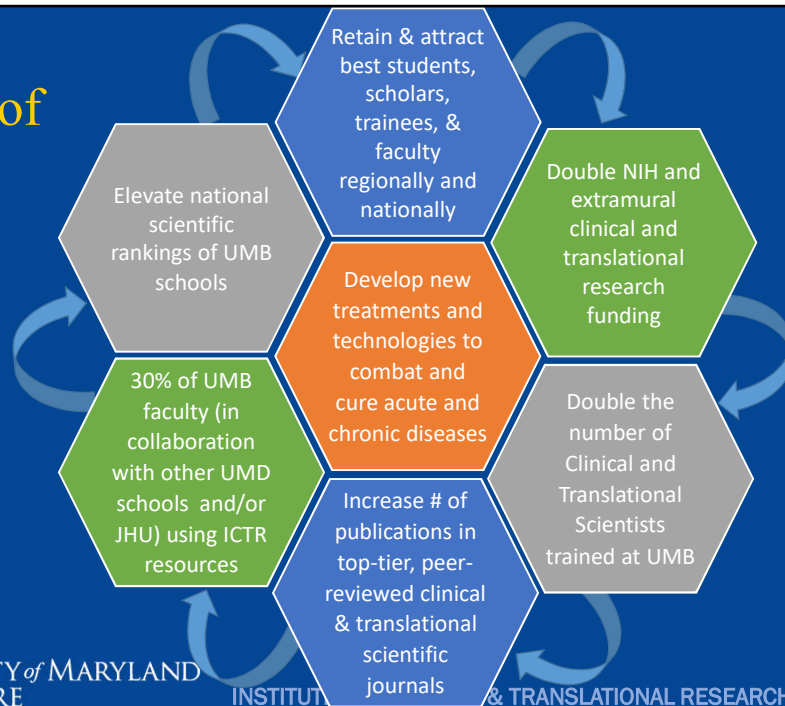


UNIVERSITY of MARYLAND
BALTIMORE

INSTITUTE FOR CLINICAL & TRANSLATIONAL RESEARCH

22

ICTR Metrics of Success

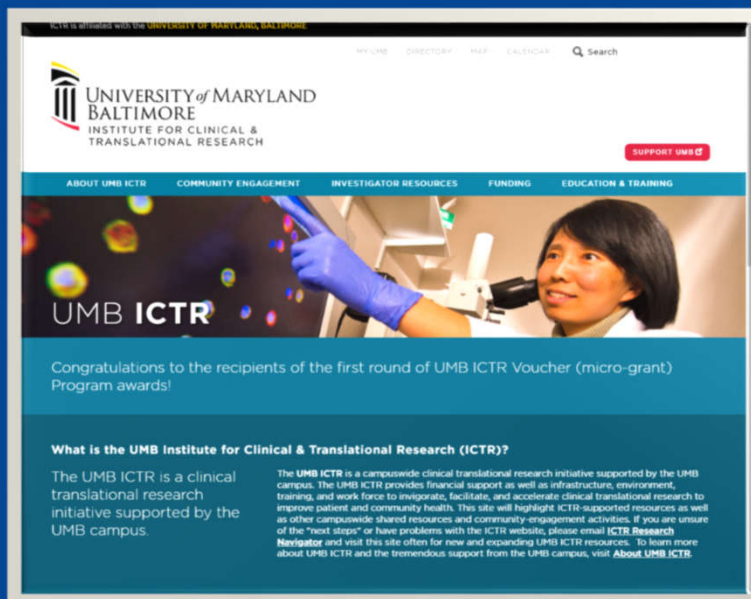


UNIVERSITY of MARYLAND
BALTIMORE

INSTITUTE FOR CLINICAL & TRANSLATIONAL RESEARCH

23

Visit UMB ICTR
at
www.umaryland.edu/ICTR



UNIVERSITY of MARYLAND
BALTIMORE

INSTITUTE FOR CLINICAL & TRANSLATIONAL RESEARCH

24